

## Manchester City Council – City Centre Spaces available for Commercial Use

### 1. MARKET STREET

Space available – 30m x 8m

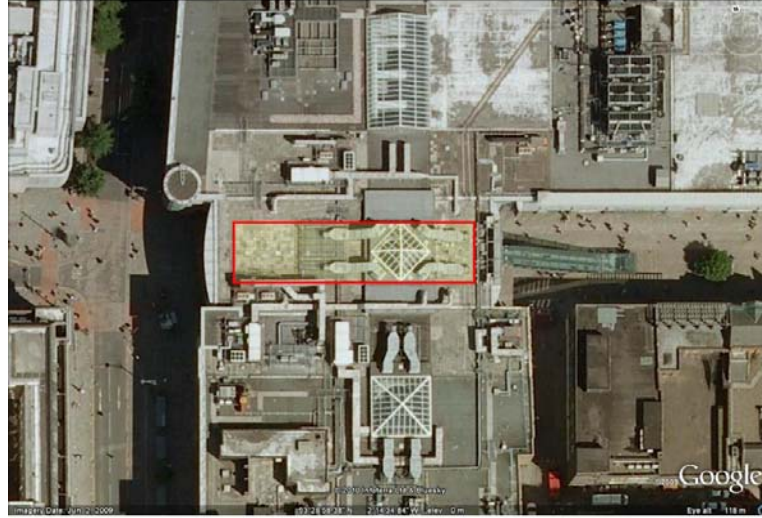
Within covered area at Corporation Street end of Market Street

Footfall: Weekdays – 90,500 Saturdays 147,500, Sundays 67,200



Market Street – Street View

MARKET STREET - COMMERCIAL USE LOCATIONS



## 2. PICCADILLY GARDENS

### SPACE AVAILABLE:

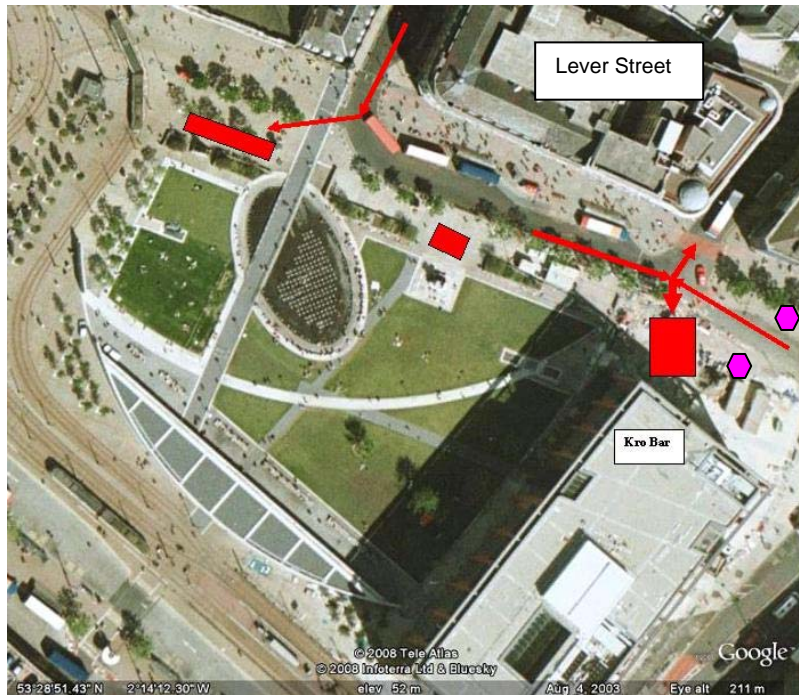
- A. 14m x 8m area at Victoria Statue
- B. 20m x 10m hardstanding area adjacent to No 1 Piccadilly
- C. 20 x 5m (x 3) as indicated on map

Footfall: Weekdays – 90,500 Saturdays 147,500, Sundays 67,200

PICCADILLY GARDENS COMMERCIAL USE LOCATIONS



## Access onto Piccadilly Gardens



Access for drop off or event vehicles is via Piccadilly, this is on a one way bus system in the city centre, event vehicles will need dispensations for parking.

If the top of Market Street is to be used – then access is directly from the main road – Lever Street, on the right hand side by Yorkshire Bank.

If the wide paving area by Kro Bar is to be used, either access down Lever Street, follow the one way system round, then access is on the right hand side, where the drop paving crosses by the traffic lights.

Alternatively coming along Portland Road, turn left into Piccadilly (this will be marked buses & access only) and either utilise the loading bay on the right hand side, or access the wide paving area on the left hand side by the traffic lights.

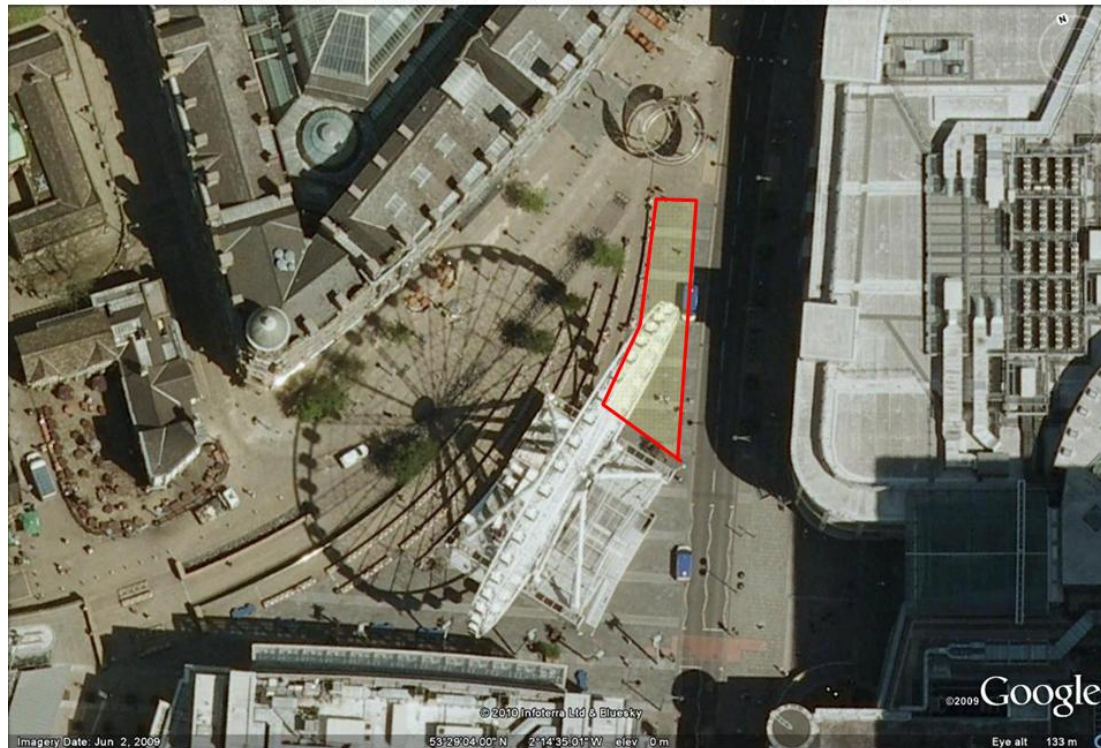
When the central area by Victoria Statue is used, access is still via the Kro Bar corner and along the wide paving. Unless the vehicle is integral to the event no parking will be allowed, loading an unloading only.

**3. EXCHANGE SQUARE**

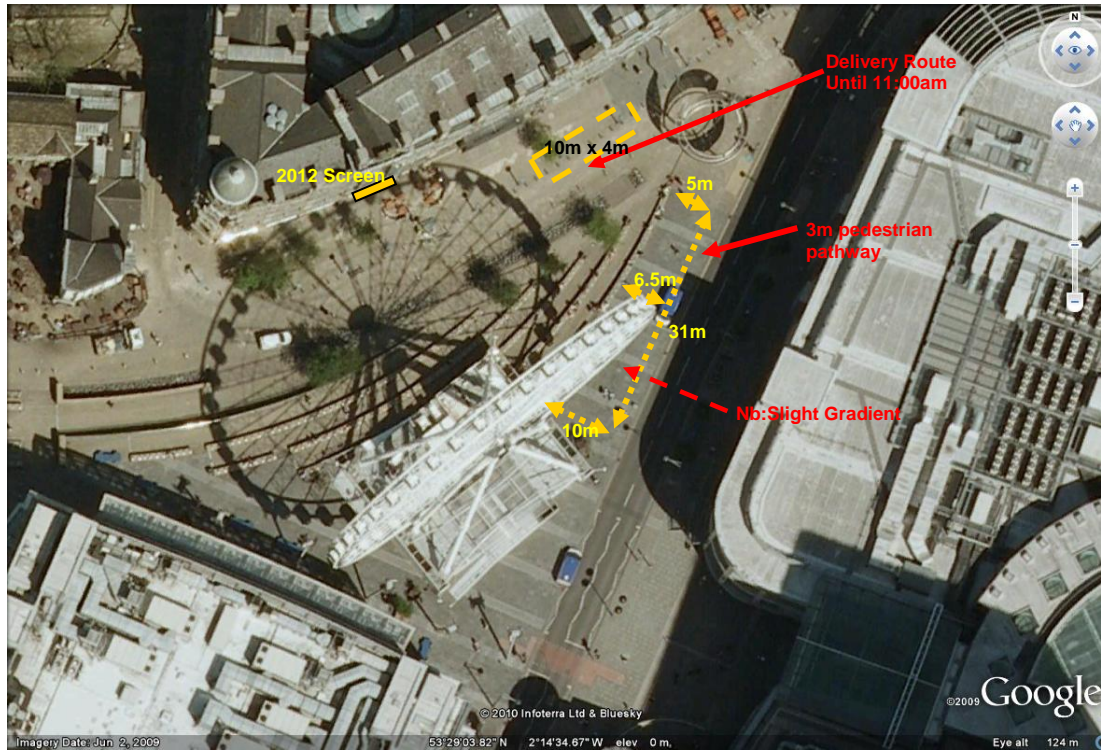
**SPACE AVAILABLE: 30m x 5m**

**Footfall: Weekdays 49,300, Saturdays 84,800, Sundays 49,800**

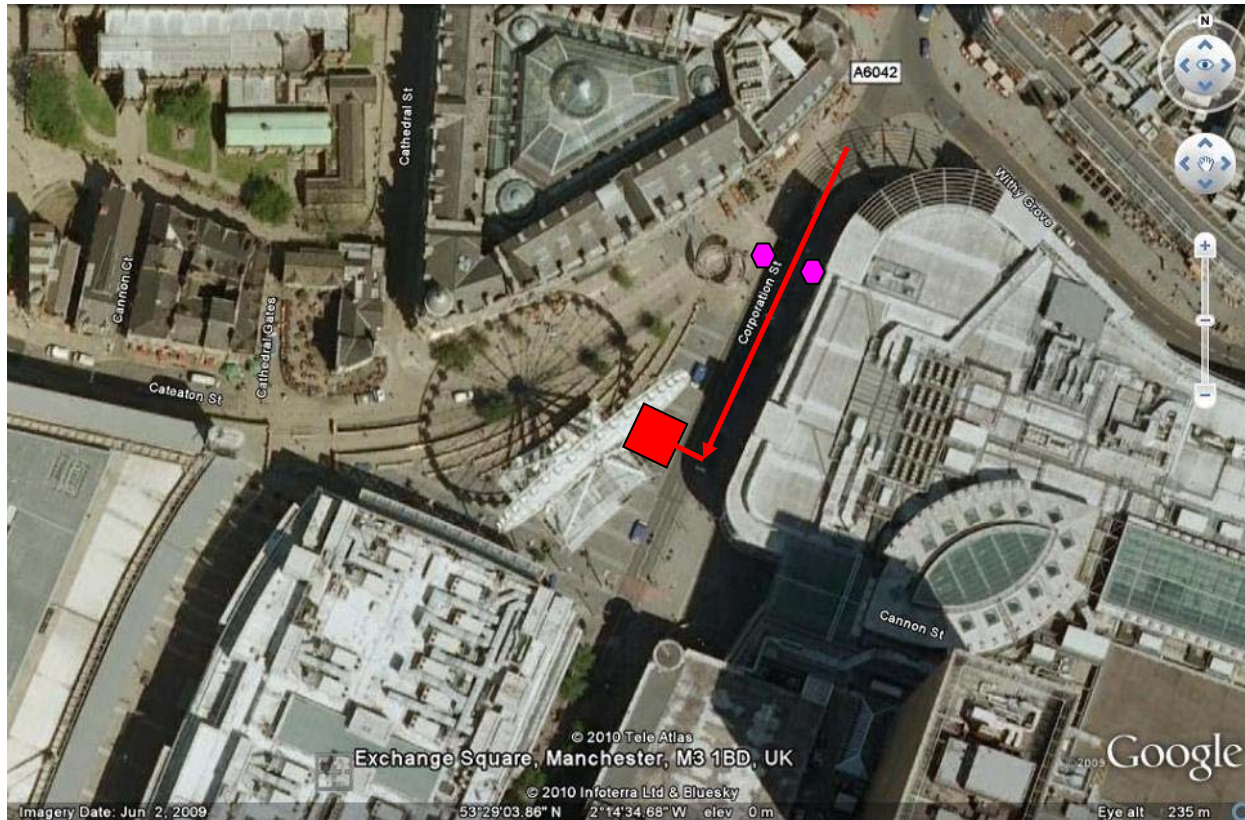
EXCHANGE SQUARE - COMMERCIAL USE LOCATION



Exchange Square – Commercial Event Area



## Exchange Square Access Information



Access to Exchange Square for vehicles is through the automated electric rise & fall bollards that are throughout the city centre. Access is from Corporation Street.

Access times – Arrival on site – Prior to 10am. Departure – After 5pm.

Unless the vehicle is integral to the event no parking will be allowed, loading and unloading only.

4. **ST ANN'S SQUARE**

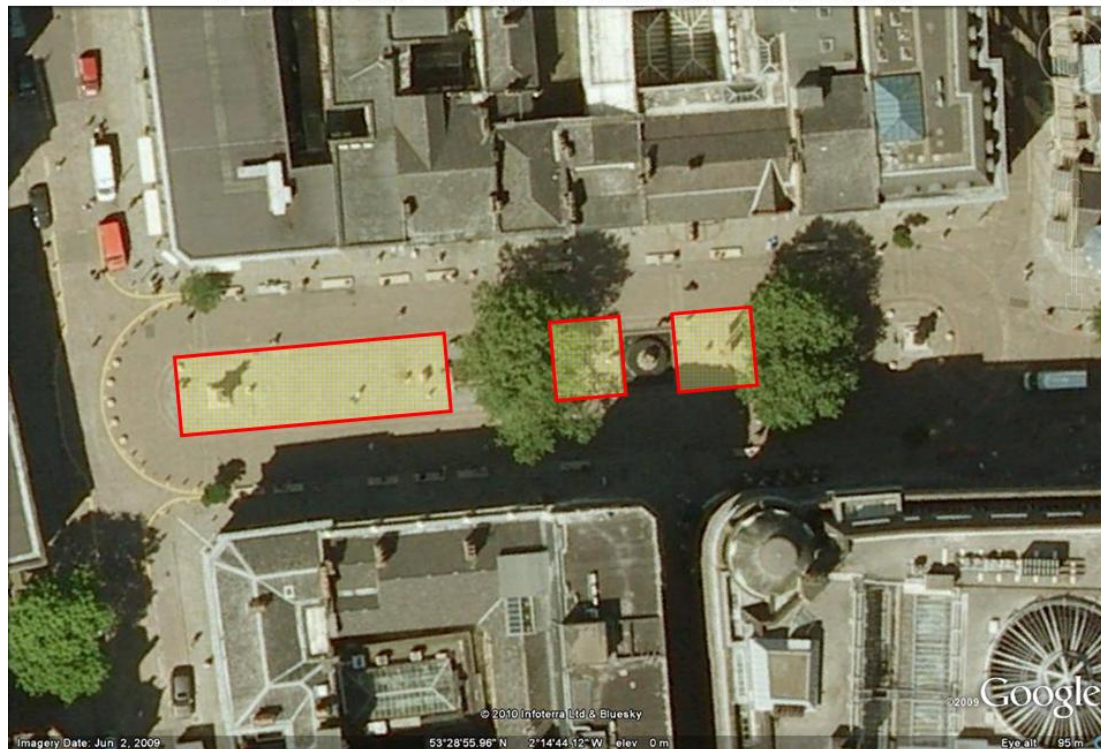
**SPACE AVAILABLE:**

**A 12m x 9m**

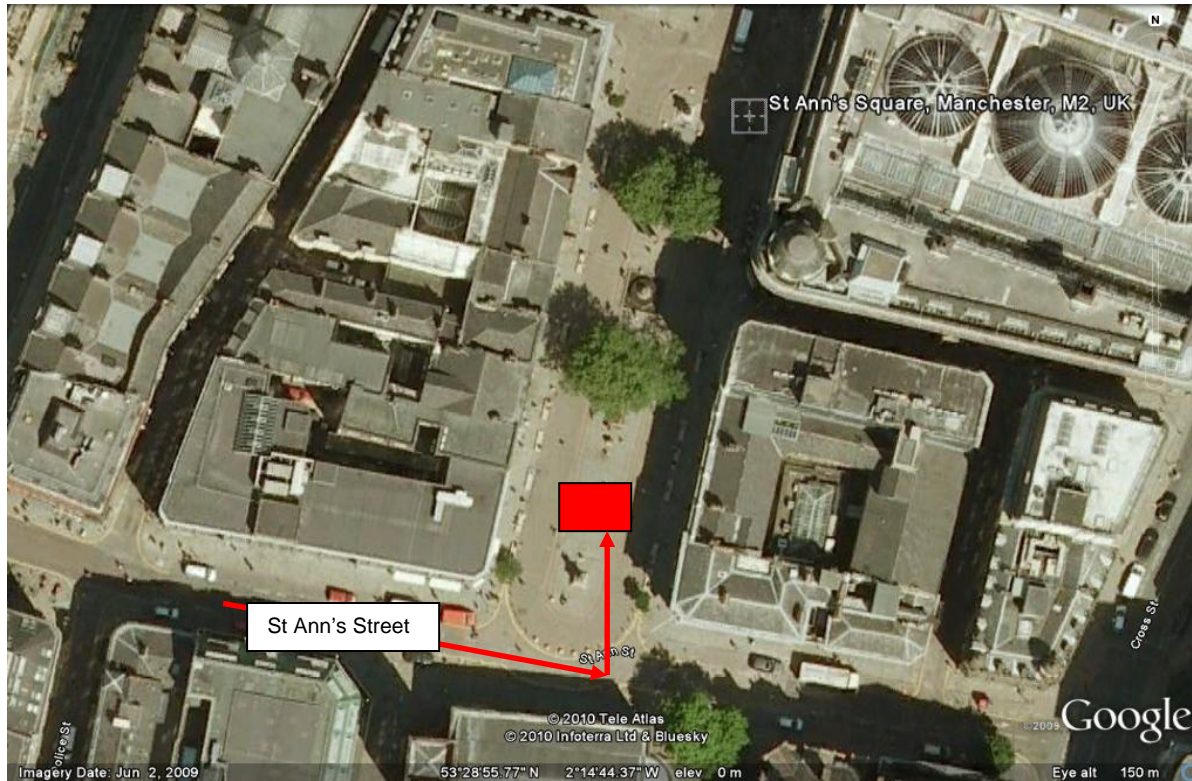
**B 5m x 9m**

**Footfall – 170,000-200,000 PER WEEK**

ST ANN'S SQUARE - COMMERCIAL USE LOCATIONS



## St Ann's Square Access Details



Access to St Ann's Square is via St Ann's Street and through the fixed bollards in a semi circle at the end.

Unless the vehicle is integral to the event no parking will be allowed, loading an unloading only.

Parking and loading bays are situated close by in St Ann's Street.