

Footfall Report for: Manchester BID

Weeks This Month: 4
Weeks Last Month: 5

Monthly Footfall Counts

	Year to date % YoY		This month % YoY		This month % MoM	
	2025	2024	2025	2024	2025	2024
Manchester BID	2.4%	5.6%	-0.7%	6.2%	10.3%	6.0%
North & Yorkshire	0.3%	-1.5%	-1.9%	-0.9%	2.6%	-1.4%
High Street Index (Regional City)	2.3%	0.3%	-1.0%	1.2%	3.6%	3.8%
High Street Index - BDSU (BDSU - Comparison)	1.7%	-0.2%	-1.0%	1.3%	3.7%	3.6%
UK	0.2%	-0.8%	-2.3%	-0.8%	2.2%	-0.1%

Benchmark calculations (Year on Year and Month on Month) have been calculated using like for like data sets (only those counters available in both comparison periods) to ensure statistical accuracy

Headlines

The total number of visitors for the year to date is 32,150,543 which is 2.4% up on the previous year.

The total number of visitors to Manchester BID in month commencing 5 October 2025 was 3,038,988.

The busiest day in month commencing 5 October 2025 was Saturday 25 October with 169,632 visitors.

The peak hour of the month was 14:00 on Saturday 25 October 2025 with footfall of 21,293.

Footfall Counts by month



■ This Month ■ Previous Year
■ Previous Month ■ 2 Years Ago

Figures shown below are calculated using monthly totals.

Weather



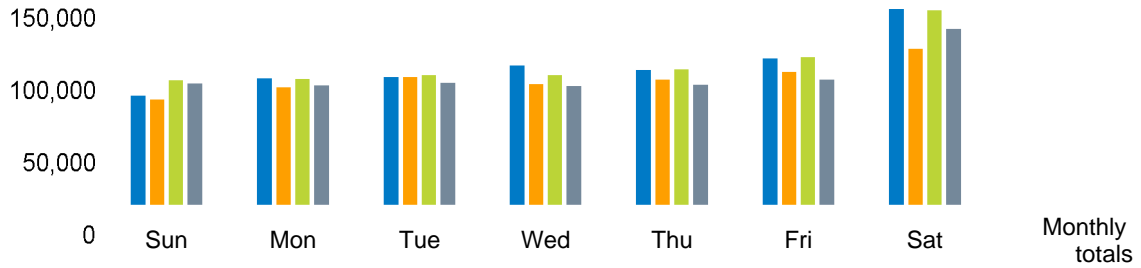
	Sun	Cloud	Rain	Wind
Number of days October 2025	4	21	2	1
Number of days October 2024	11	17		
Number of days October 2023	10	12	5	1

Average temperature

	Maximum temperature	Minimum temperature
2025	15°	8°
2024	16°	8°
2023	15°	7°

Footfall Counts by day

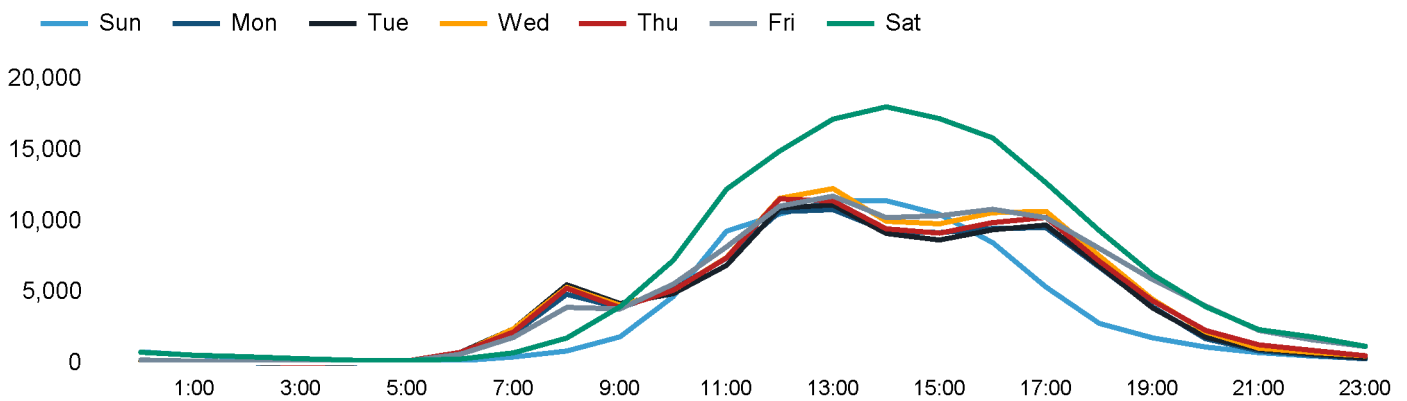
The figures shown below are calculated using weekly averages.



This Month	85,419	98,523	99,583	108,086	104,529	113,158	150,449	759,747
Previous Month	82,628	91,511	99,265	94,215	97,460	103,113	120,554	688,746
Previous Year	96,970	98,053	100,982	100,802	105,173	114,101	149,103	765,184
2 Years Ago	94,469	93,094	94,943	92,552	93,854	97,270	135,553	701,735
Month on month %	3.4%	7.7%	0.3%	14.7%	7.3%	9.7%	24.8%	
Year on year %	-11.9%	0.5%	-1.4%	7.2%	-0.6%	-0.8%	0.9%	

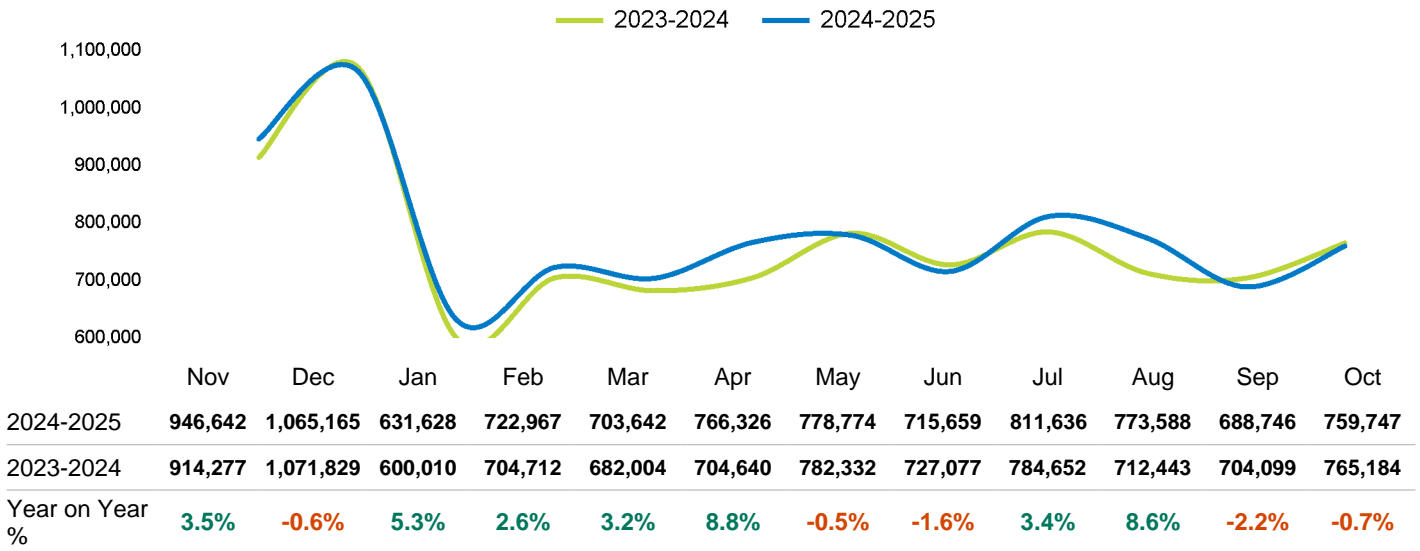
Footfall Counts by hour

The figures shown below are calculated using a weekly average



Footfall Counts - rolling 12 months

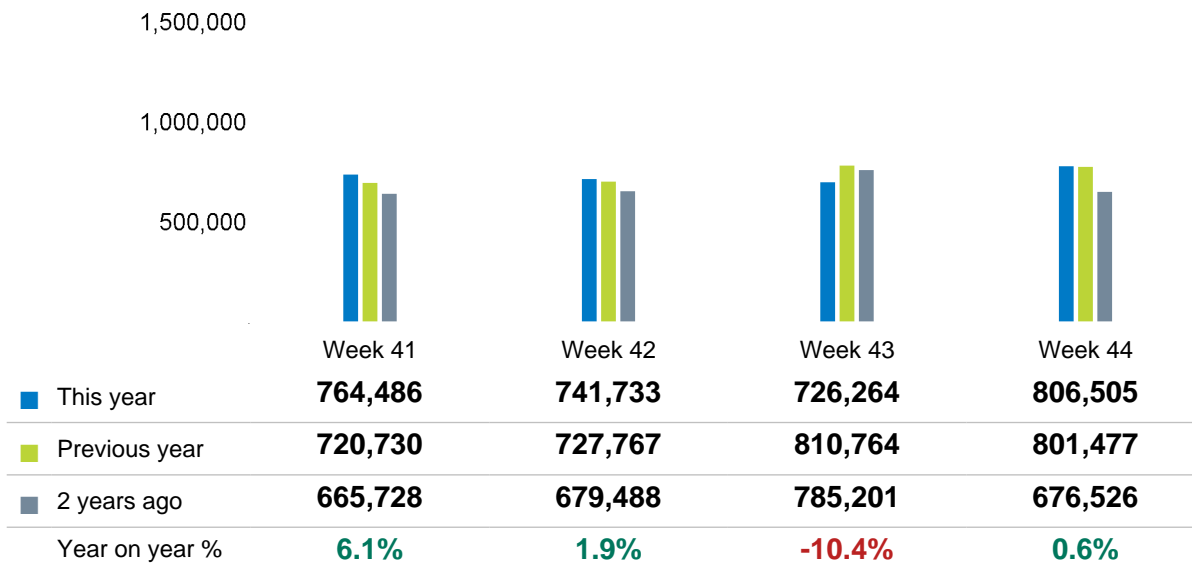
The figures shown below are calculated using weekly averages.



Year on year % is calculated by comparing the 2024-2025 period with the 2023-2024 period i.e the figure for October compares October 2025 to October 2024

Footfall Counts by week of month

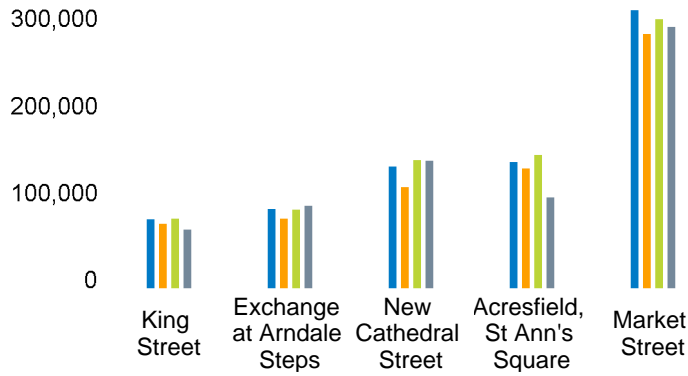
The figures shown below are calculated using weekly totals.



Footfall Counts by location

The figures shown below are calculated using weekly averages.

■ This Month
 ■ Previous Month
 ■ Previous Year
 ■ 2 Years Ago



This Month	80,978	91,683	137,840	142,599	306,644
Previous Month	75,796	81,098	115,523	135,605	280,723
Previous Year	81,535	91,097	144,924	150,564	297,063
2 Years Ago	69,560	95,191	143,884	104,314	288,785
Year on Year %	-0.7 %	0.6 %	-4.9 %	-5.3 %	3.2 %

Footfall Counts by location



- Market Street, 40.4 %
- Acresfield, St Ann's Square, 18.8 %
- New Cathedral Street, 18.1 %
- Exchange at Arndale Steps, 12.1 %
- King Street, 10.7 %



Reporting dates

This month - 05 October 2025 - 01 November 2025

Year to Date % Change is the annual % change in footfall from January of this year compared to the same period last year. January, 2025 to October, 2025 Vs January, 2024 to October, 2024

Year on Year % Change is the % change in footfall for this month compared to the same week in the previous year. October, 2025 Vs October, 2024

Month on Month % Change is the % change in footfall for this Month from the previous Month. 10 2025 Vs 9 2025

