

Footfall Report for: Manchester BID

Weeks This Month: 4
Weeks Last Month: 4

Monthly Footfall Counts

	Year to date % YoY		This month % YoY		This month % MoM	
	2024	2023	2024	2023	2024	2023
Manchester BID	-0.3%	11.0%	-2.4%	-2.5%	26.1%	30.1%
North & Yorkshire	-1.4%	0.5%	0.3%	-0.6%	1.1%	-0.2%
High Street Index - BDSU (BDSU - Comparison)	0.0%	5.0%	1.7%	-1.9%	5.9%	3.7%
High Street Index(Regional City)	0.3%	8.4%	0.2%	-0.5%	3.6%	2.6%
UK	-0.7%	3.5%	0.2%	-0.7%	0.8%	-1.0%

Benchmark calculations (Year on Year and Month on Month) have been calculated using like for like data sets (only those counters available in both comparison periods) to ensure statistical accuracy

Headlines

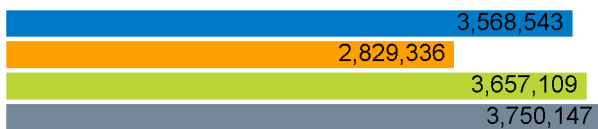
The total number of visitors for the year to date is 32,506,509 which is 0.3% down on the previous year.

The total number of visitors to Manchester BID in month commencing 27 October 2024 was 3,568,543.

The busiest day in month commencing 27 October 2024 was Saturday 16 November with 235,639 visitors.

The peak hour of the month was 14:00 on Saturday 16 November 2024 with footfall of 27,963.

Footfall Counts by month



■ This Month ■ Previous Year
■ Previous Month ■ 2 Years Ago

Figures shown below are calculated using monthly totals.

Weather



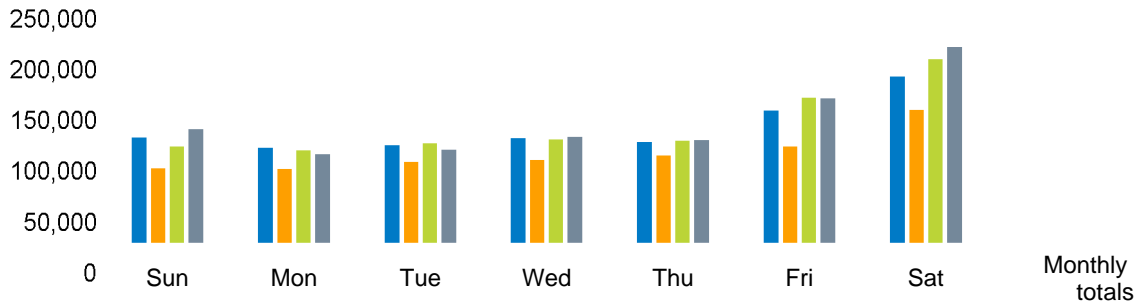
	Sun	Cloud	Rain	Snow	Wind
Number of days this month	5	18	1	1	3
Number of days same month last year	7	16	5		
Number of days same month two years ago	12	12	4		

Average temperature

	Maximum temperature	Minimum temperature
2024	12°	5°
2023	12°	5°
2022	13°	8°

Footfall Counts by day

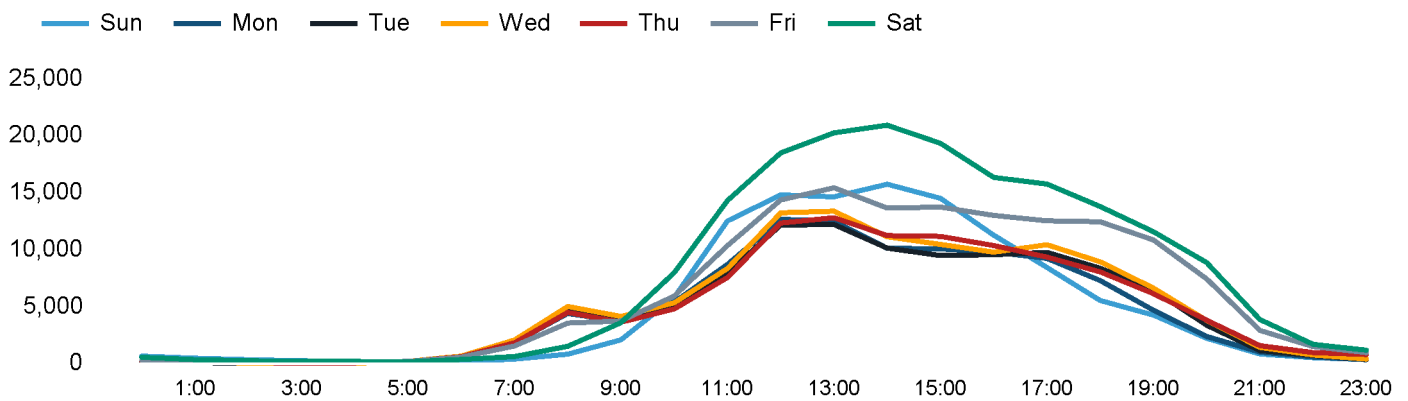
The figures shown below are calculated using weekly averages.



This Month	117,559	106,555	109,229	117,135	112,791	146,113	182,753	892,135
Previous Month	84,774	84,180	91,426	93,700	98,541	107,938	146,775	707,334
Previous Year	108,265	104,263	111,163	115,520	114,222	159,869	200,975	914,277
2 Years Ago	126,302	99,592	104,956	118,012	115,126	159,211	214,337	937,536
Month on month %	38.7%	26.6%	19.5%	25.0%	14.5%	35.4%	24.5%	
Year on year %	8.6%	2.2%	-1.7%	1.4%	-1.3%	-8.6%	-9.1%	

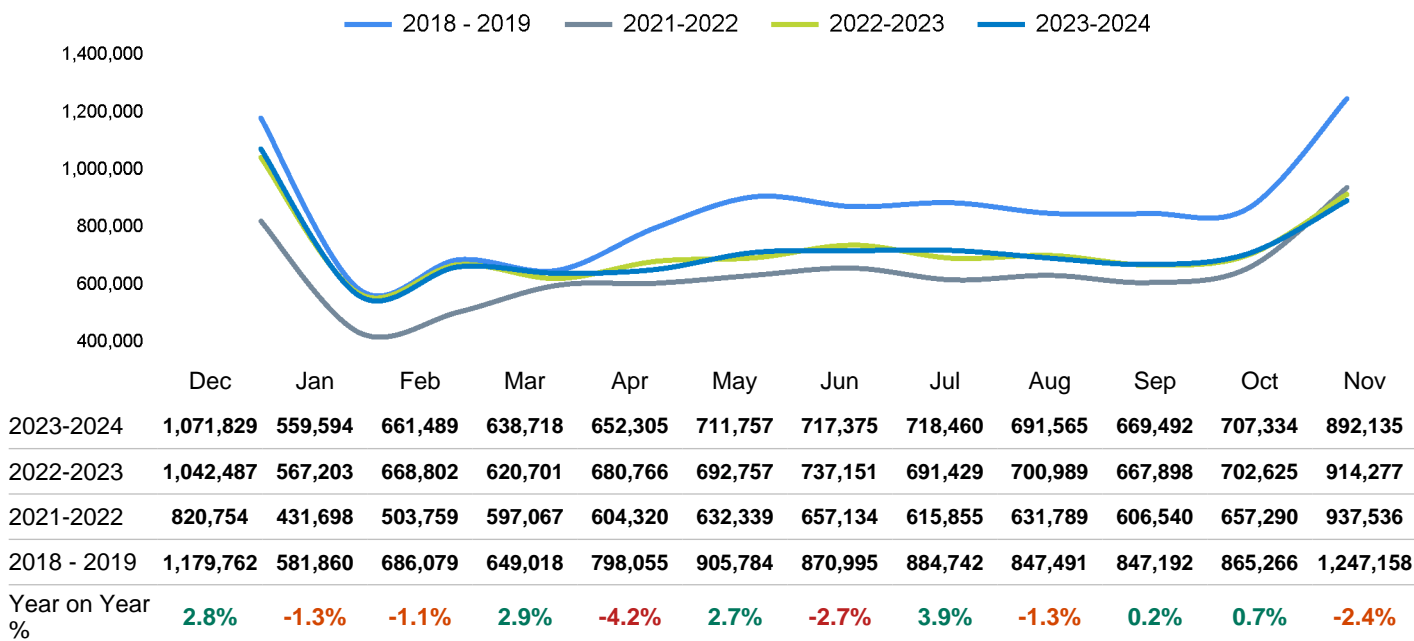
Footfall Counts by hour

The figures shown below are calculated using a weekly average



Footfall Counts - rolling 12 months

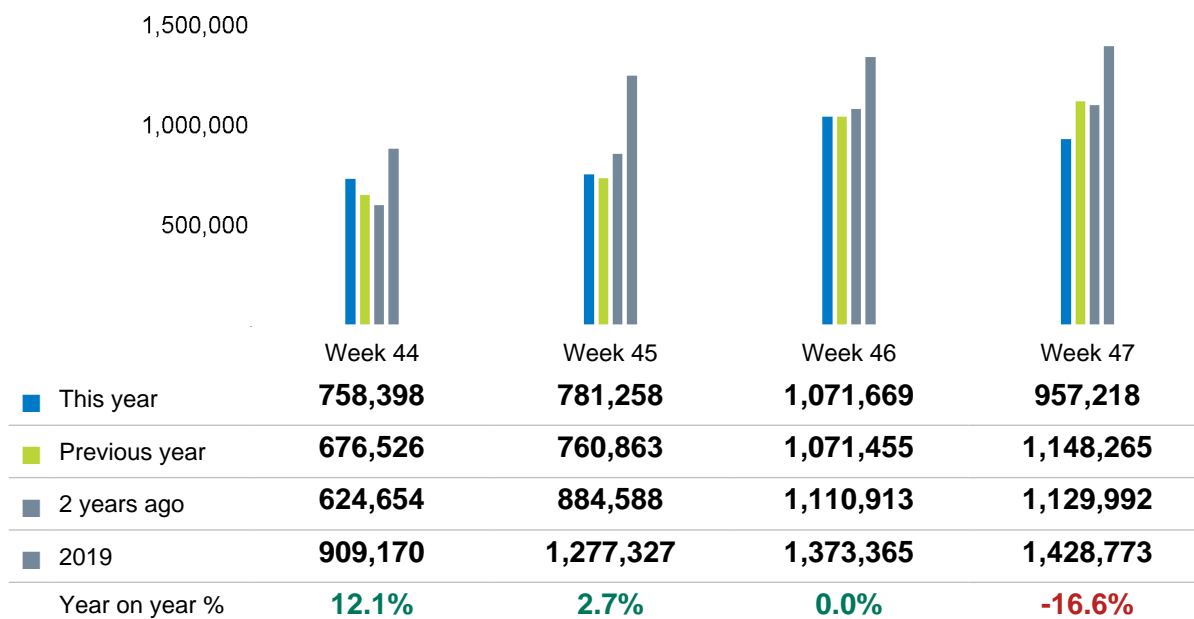
The figures shown below are calculated using weekly averages.



Year on year % is calculated by comparing the 2023-2024 period with the 2022-2023 period i.e the figure for November compares November 2024 to November 2023

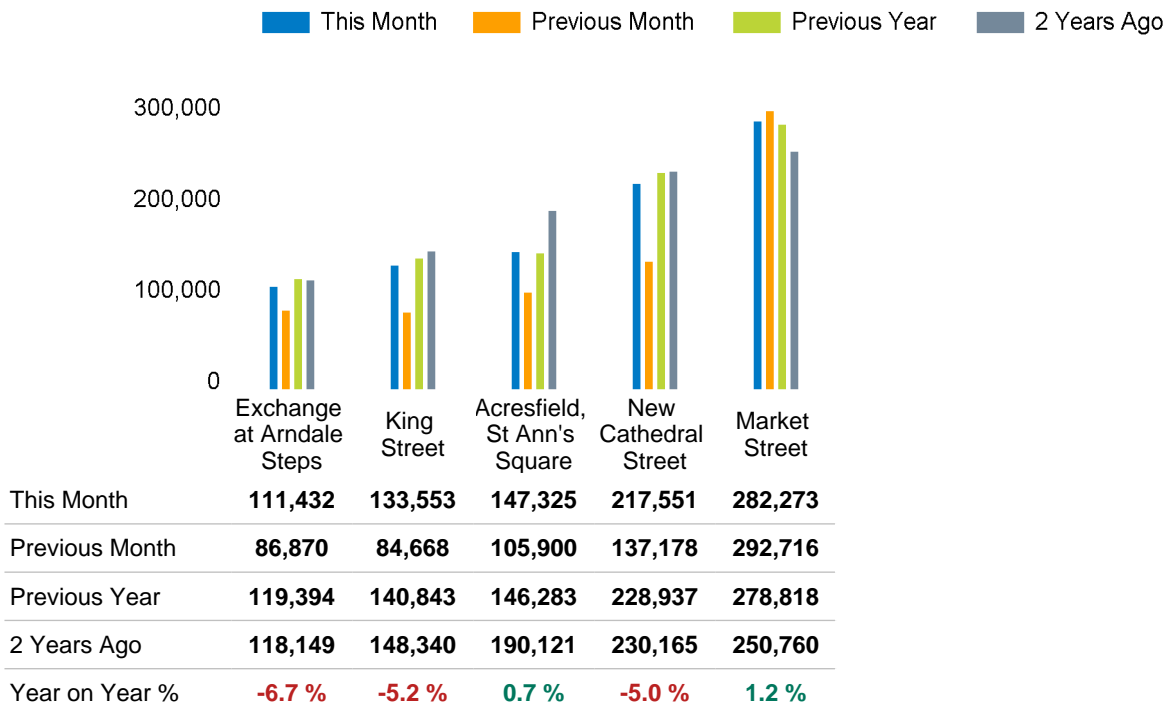
Footfall Counts by week of month

The figures shown below are calculated using weekly totals.

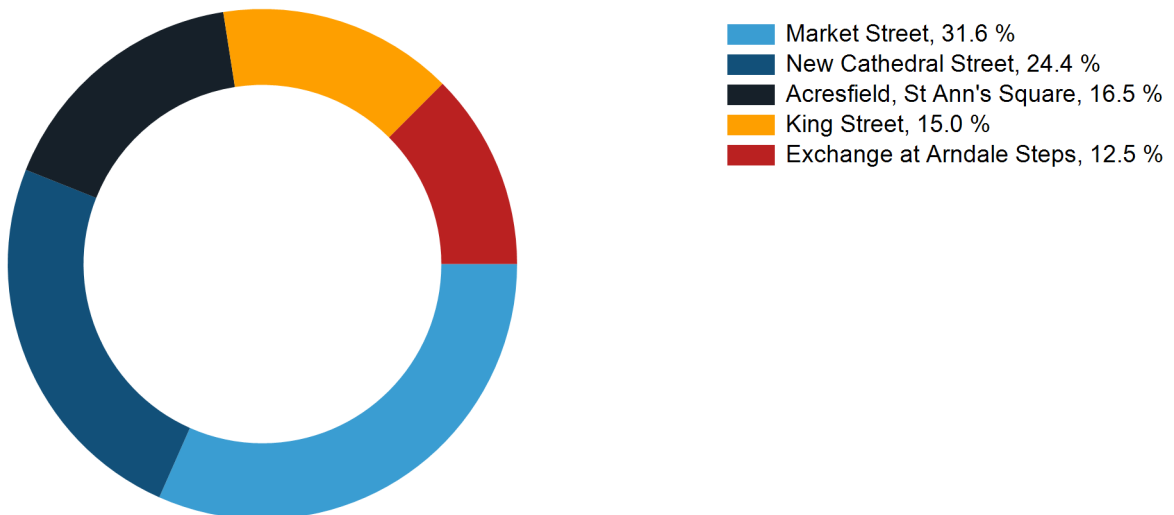


Footfall Counts by location

The figures shown below are calculated using weekly averages.



Footfall Counts by location



Reporting dates

This month - 27 October 2024 - 23 November 2024

Year to Date % Change is the annual % change in footfall from January of this year compared to the same period last year. January, 2024 to November, 2024 Vs January, 2023 to November, 2023

Year on Year % Change is the % change in footfall for this month compared to the same week in the previous year. November, 2024 Vs November, 2023

Month on Month % Change is the % change in footfall for this Month from the previous Month. 11 2024 Vs 10 2024

