

Footfall Report for: Manchester BID

Weeks This Month: 5
Weeks Last Month: 4

Monthly Footfall Counts

	Year to date %		Year on year %		Month on month %	
	2023	2022	2023	2022	2023	2022
Manchester BID	9.8%	23.8%	2.8%	27.0%	17.2%	11.2%
North & Yorkshire	0.6%	22.9%	1.3%	3.5%	1.2%	-0.5%
High Street Index - BDSU (BDSU - Comparison)	4.6%	38.5%	1.3%	21.3%	9.1%	7.8%
High Street Index(Regional City)	7.8%	48.6%	2.9%	27.7%	9.5%	7.7%
UK	3.3%	30.8%	1.2%	12.7%	3.7%	1.6%

Benchmark calculations (Year on Year and Month on Month) have been calculated using like for like data sets (only those counters available in both comparison periods) to ensure statistical accuracy

Headlines

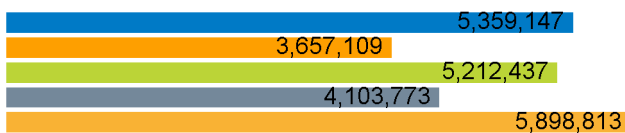
The total number of visitors for the year to date is 37,963,302 which is 9.8% up on the previous year.

The total number of visitors to Manchester BID in month commencing 26 November 2023 was 5,359,147.

The busiest day in month commencing 26 November 2023 was Saturday 2 December with 244,767 visitors.

The peak hour of the month was 15:00 on Saturday 2 December 2023 with footfall of 27,336.

Footfall Counts by month



■ This Month ■ 2 Years Ago
■ Previous Month ■ 2019
■ Previous Year

Figures shown below are calculated using monthly totals.

Weather



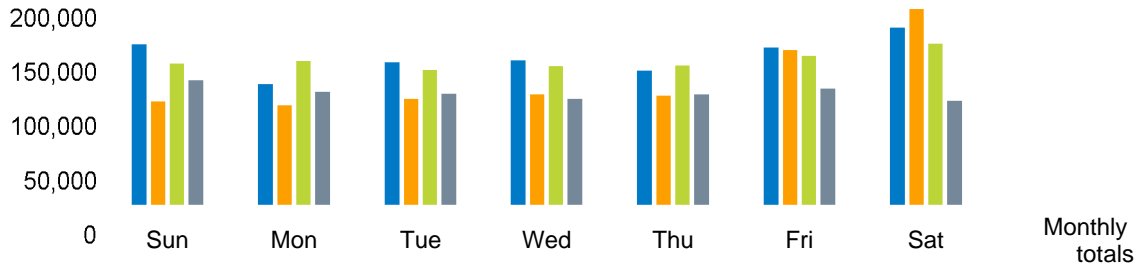
	Sun	Cloud	Rain	Snow	Wind
Number of days this month	7	21	6		1
Number of days same month last year	16	9	5		5
Number of days same month two years ago	3	3	25	1	3

Average temperature

	Maximum temperature	Minimum temperature
2023	9°	3°
2022	7°	2°
2021	8°	4°

Footfall Counts by day

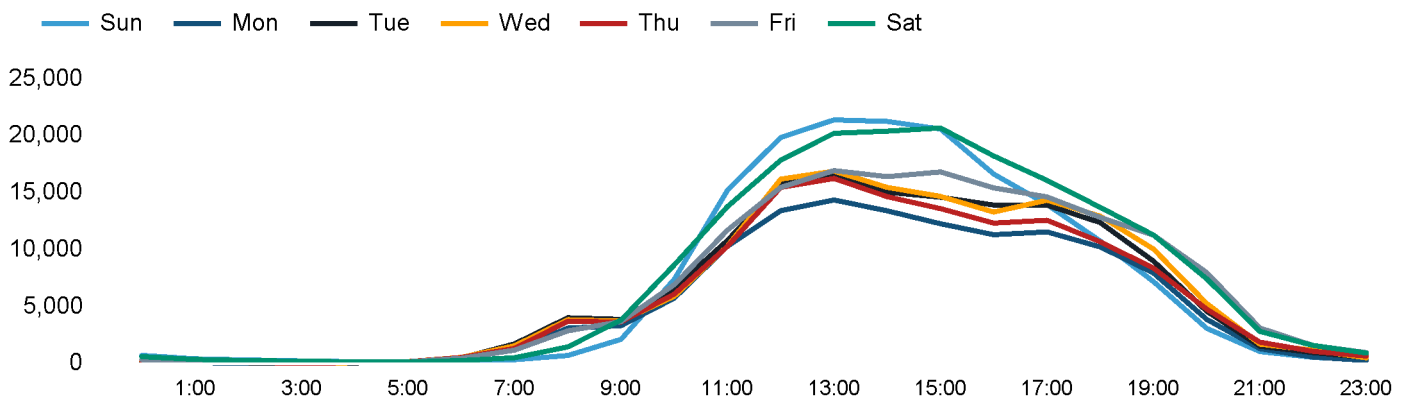
The figures shown below are calculated using weekly averages.



This Month	165,177	125,898	147,496	149,758	139,356	162,024	182,120	1,071,829
Previous Month	108,265	104,263	111,163	115,520	114,222	159,869	200,975	914,277
Previous Year	146,105	148,713	139,621	143,378	144,270	154,085	166,315	1,042,487
2 Years Ago	129,845	118,143	116,194	110,899	115,688	121,124	108,861	820,754
Month on month %	52.6%	20.8%	32.7%	29.6%	22.0%	1.3%	-9.4%	
Year on year %	13.1%	-15.3%	5.6%	4.4%	-3.4%	5.2%	9.5%	

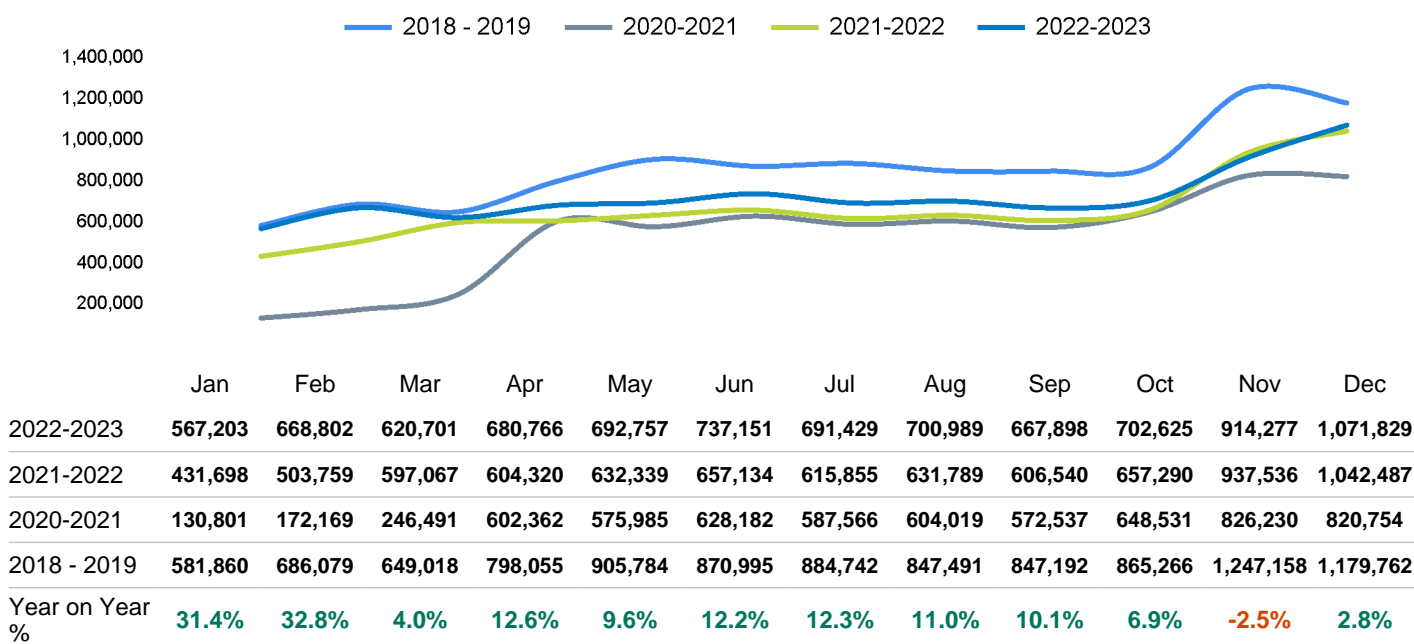
Footfall Counts by hour

The figures shown below are calculated using a weekly average



Footfall Counts - rolling 12 months

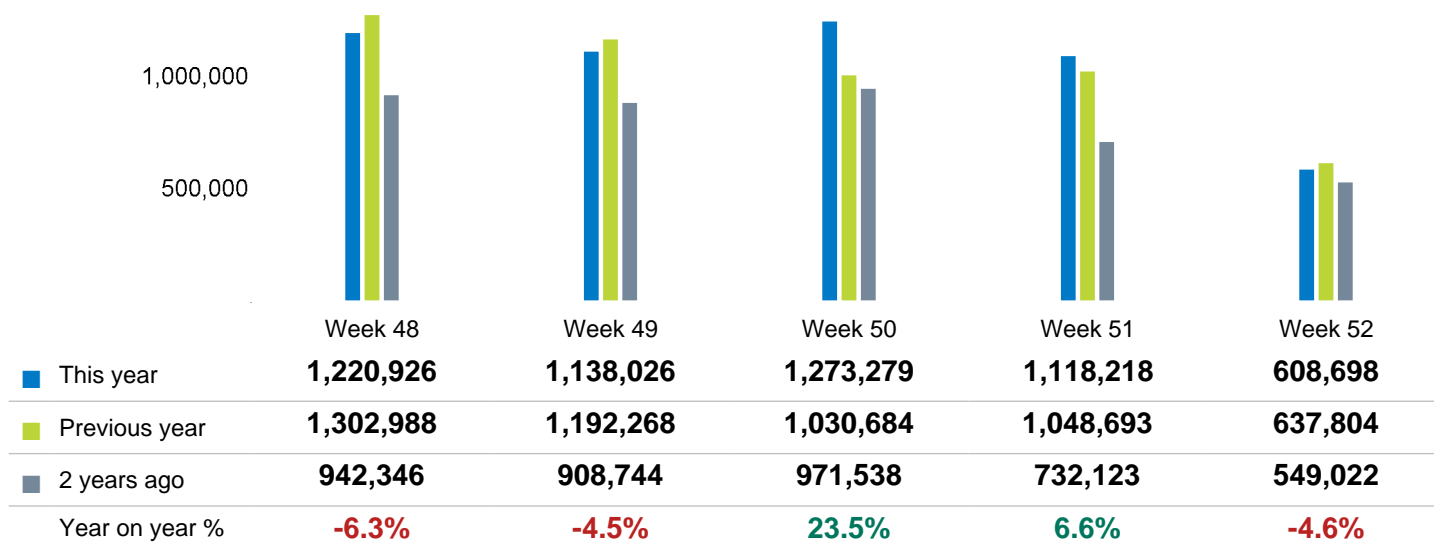
The figures shown below are calculated using weekly averages.



Year on year % is calculated by comparing the 2022-2023 period with the 2021-2022 period i.e the figure for December compares December 2023 to December 2022

Footfall Counts by week of month

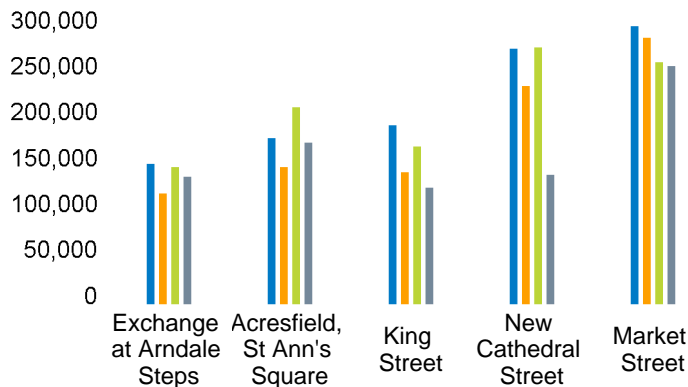
The figures shown below are calculated using weekly totals.



Footfall Counts by location

The figures shown below are calculated using weekly averages.

■ This Month
 ■ Previous Month
 ■ Previous Year
 ■ 2 Years Ago



This Month	149,390	176,040	189,078	267,050	290,268
Previous Month	119,394	146,283	140,843	228,937	278,818
Previous Year	146,327	207,332	166,992	268,405	253,430
2 Years Ago	136,132	171,518	125,053	138,420	249,630
Year on Year %	2.1 %	-15.1 %	13.2 %	-0.5 %	14.5 %

Footfall Counts by location



- Market Street, 27.1 %
- New Cathedral Street, 24.9 %
- King Street, 17.6 %
- Acresfield, St Ann's Square, 16.4 %
- Exchange at Arndale Steps, 13.9 %

Reporting dates

This month - 26 November 2023 - 30 December 2023

Year to Date % Change is the annual % change in footfall from January of this year compared to the same period last year. January, 2023 to December, 2023 Vs January, 2022 to December, 2022

Year on Year % Change is the % change in footfall for this month compared to the same week in the previous year. December, 2023 Vs December, 2022

Month on Month % Change is the % change in footfall for this Month from the previous Month. 12 2023 Vs 11 2023

2019 Comparison for: Manchester BID

2019 comparison for Manchester BID

The impact of Covid-19 on footfall means that subsequent to the anniversary of Lockdown 1 (23rd March 2021), it is important to add a further annual comparison of 2022 versus 2019 in order to provide a comparison to the last normal trading year. This is provided in the section **below** and shows your current performance in 2022 against the similar time period in 2019

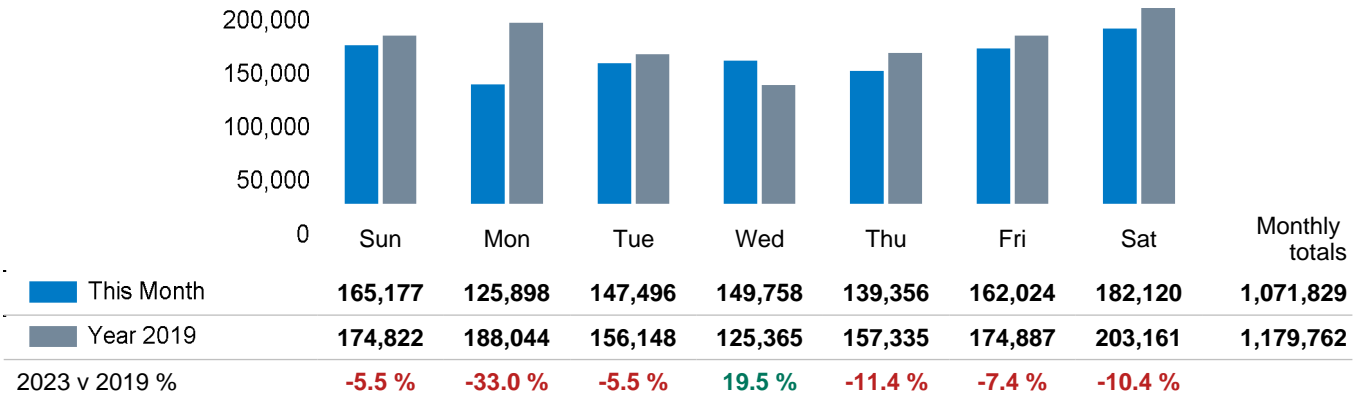
Headlines

	Year to date % 2023 Vs 2019	Year on year % 2023 Vs 2019
Manchester BID	-19.1 %	-9.1 %
North & Yorkshire	-15.9 %	-14.9 %
High Street Index - BDSU (BDSU - Comparison)	-16.7 %	-13.5 %
High Street Index(Regional City)	-12.4 %	-7.6 %
UK	-13.5 %	-11.4 %

Manchester BID is compared to the high street index.

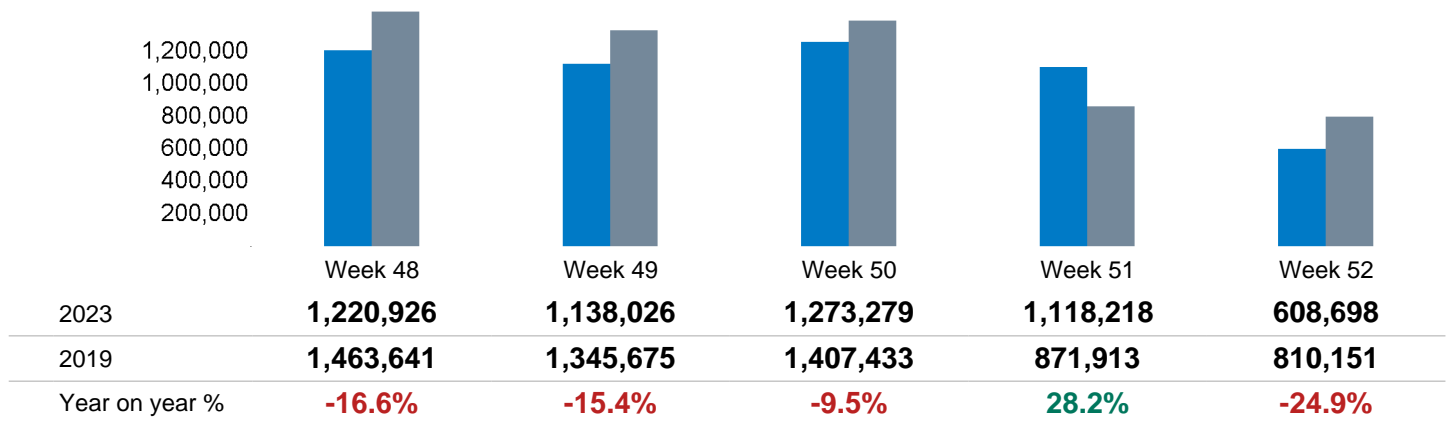
Footfall Counts by day

The figures shown below are calculated using weekly averages.



Footfall Counts by week of month

The figures shown below are calculated using weekly totals.



Footfall Counts by location

The figures shown below are calculated using weekly averages.

