

Footfall Report for: Manchester BID

Weeks This Month: 5
Weeks Last Month: 4

Monthly Footfall Counts

	Year to date % YoY		This month % YoY		This month % MoM	
	2024	2023	2024	2023	2024	2023
Manchester BID	-1.2%	9.8%	-6.6%	2.8%	12.3%	17.2%
North & Yorkshire	-1.2%	0.6%	0.8%	1.3%	1.1%	1.2%
High Street Index - BDSU (BDSU - Comparison)	0.4%	4.6%	3.1%	1.3%	11.7%	9.1%
High Street Index (Regional City)	0.4%	7.8%	0.6%	2.9%	11.0%	9.5%
UK	-0.6%	3.3%	0.3%	1.2%	4.8%	3.7%

Benchmark calculations (Year on Year and Month on Month) have been calculated using like for like data sets (only those counters available in both comparison periods) to ensure statistical accuracy

Headlines

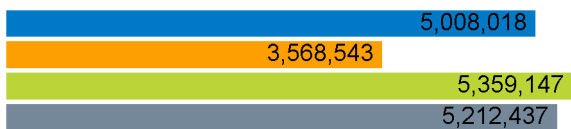
The total number of visitors for the year to date is 37,514,527 which is 1.2% down on the previous year.

The total number of visitors to Manchester BID in month commencing 24 November 2024 was 5,008,018.

The busiest day in month commencing 24 November 2024 was Saturday 30 November with 237,962 visitors.

The peak hour of the month was 15:00 on Saturday 30 November 2024 with footfall of 25,885.

Footfall Counts by month



■ This Month ■ Previous Year
■ Previous Month ■ 2 Years Ago

Figures shown below are calculated using monthly totals.

Weather



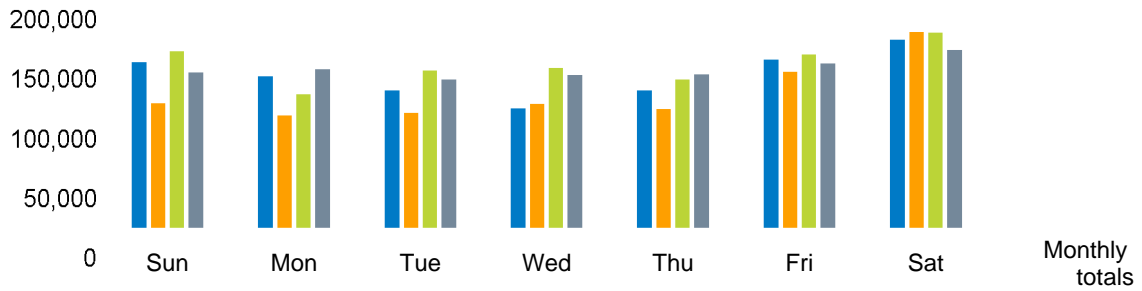
	Sun	Cloud	Rain	Wind
Number of days this month	9	20	3	3
Number of days same month last year	7	21	6	1
Number of days same month two years ago	16	9	5	5

Average temperature

	Maximum temperature	Minimum temperature
2024	11°	4°
2023	9°	3°
2022	7°	2°

Footfall Counts by day

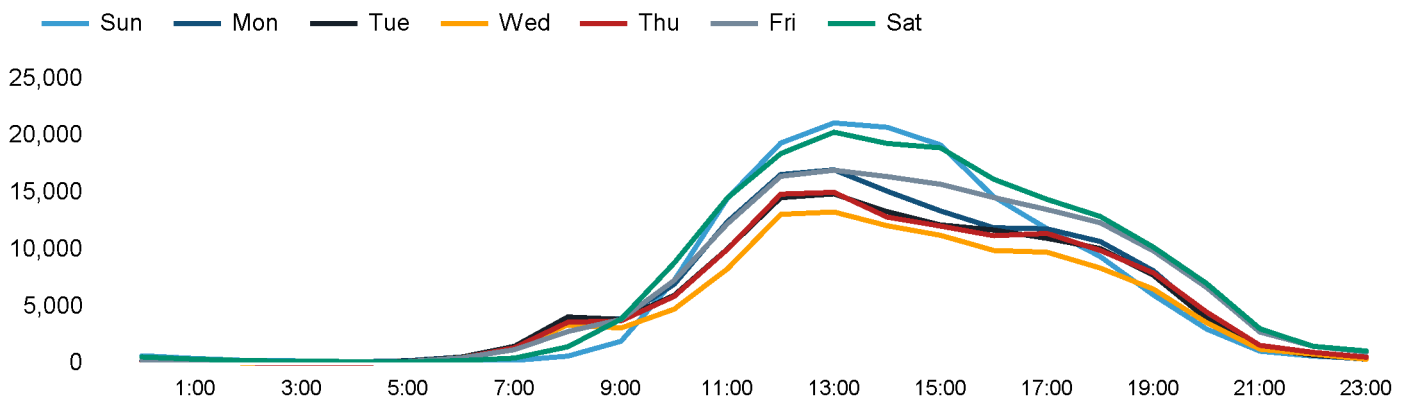
The figures shown below are calculated using weekly averages.



This Month	154,874	142,036	129,480	113,078	129,407	157,434	175,294	1,001,603
Previous Month	117,559	106,555	109,229	117,135	112,791	146,113	182,753	892,135
Previous Year	165,177	125,898	147,496	149,758	139,356	162,024	182,120	1,071,829
2 Years Ago	146,105	148,713	139,621	143,378	144,270	154,085	166,315	1,042,487
Month on month %	31.7%	33.3%	18.5%	-3.5%	14.7%	7.7%	-4.1%	
Year on year %	-6.2%	12.8%	-12.2%	-24.5%	-7.1%	-2.8%	-3.7%	

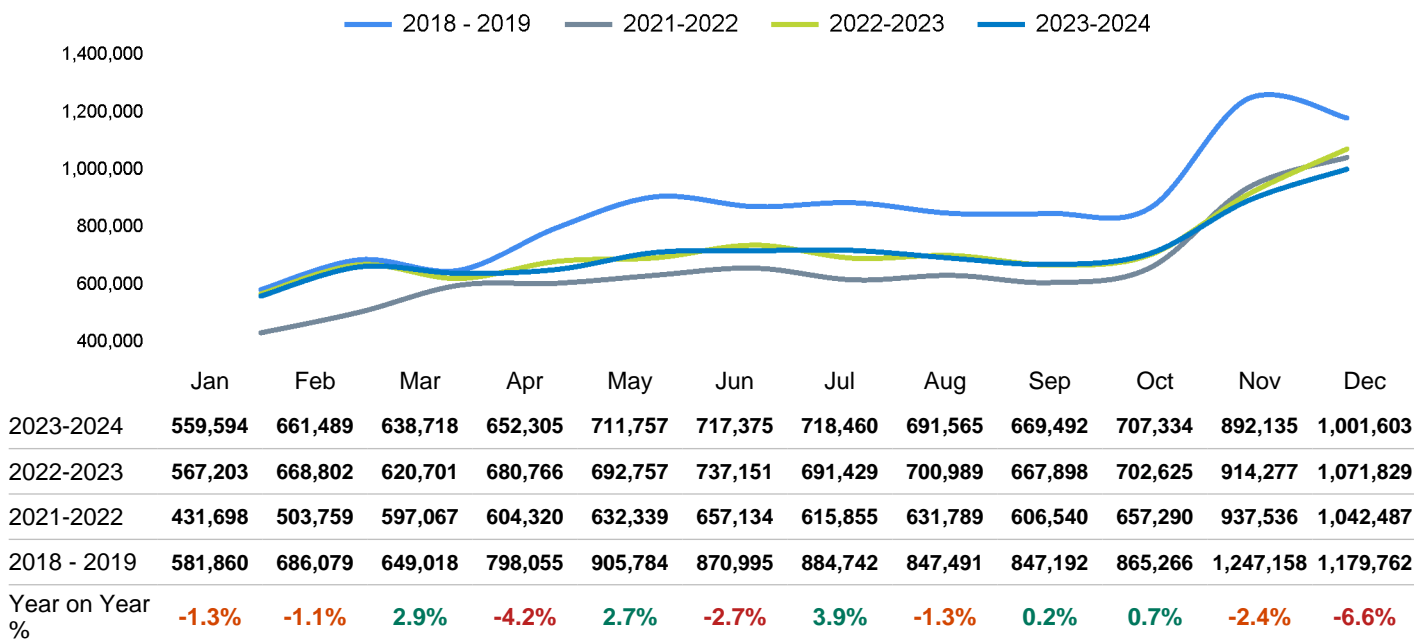
Footfall Counts by hour

The figures shown below are calculated using a weekly average



Footfall Counts - rolling 12 months

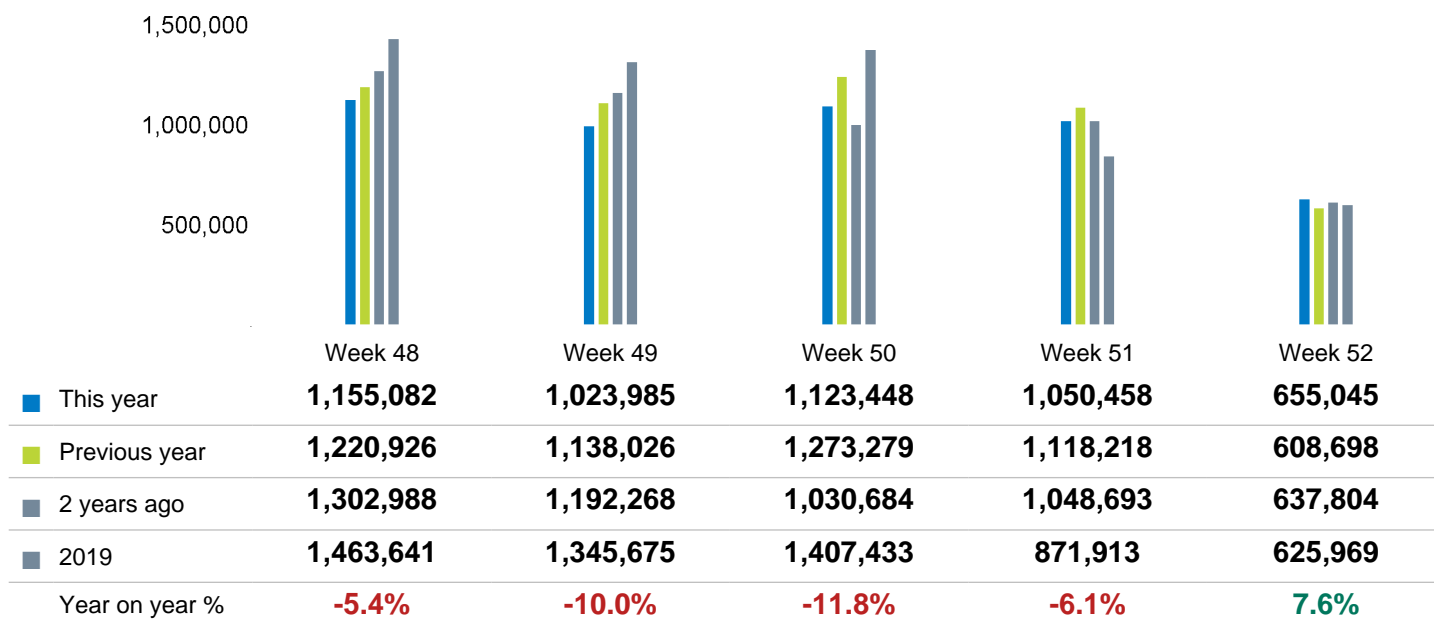
The figures shown below are calculated using weekly averages.



Year on year % is calculated by comparing the 2023-2024 period with the 2022-2023 period i.e the figure for December compares December 2024 to December 2023

Footfall Counts by week of month

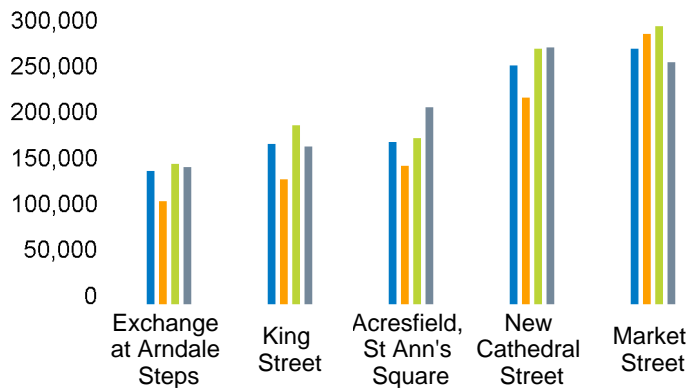
The figures shown below are calculated using weekly totals.



Footfall Counts by location

The figures shown below are calculated using weekly averages.

■ This Month
 ■ Previous Month
 ■ Previous Year
 ■ 2 Years Ago



This Month	142,364	169,869	171,788	250,001	267,580
Previous Month	111,432	133,553	147,325	217,551	282,273
Previous Year	149,390	189,078	176,040	267,050	290,268
2 Years Ago	146,327	166,992	207,332	268,405	253,430
Year on Year %	-4.7 %	-10.2 %	-2.4 %	-6.4 %	-7.8 %

Footfall Counts by location



- Market Street, 26.7 %
- New Cathedral Street, 25.0 %
- Acresfield, St Ann's Square, 17.2 %
- King Street, 17.0 %
- Exchange at Arndale Steps, 14.2 %



Reporting dates

This month - 24 November 2024 - 28 December 2024

Year to Date % Change is the annual % change in footfall from January of this year compared to the same period last year. January, 2024 to December, 2024 Vs January, 2023 to December, 2023

Year on Year % Change is the % change in footfall for this month compared to the same week in the previous year. December, 2024 Vs December, 2023

Month on Month % Change is the % change in footfall for this Month from the previous Month. 12 2024 Vs 11 2024

