

Footfall Report for: Manchester BID

Weeks This Month: 4
Weeks Last Month: 5

Monthly Footfall Counts

	Year to date % YoY		This month % YoY		This month % MoM	
	2025	2024	2025	2024	2025	2024
Manchester BID	4.9%	5.0%	8.8%	1.5%	8.9%	2.0%
North & Yorkshire	1.8%	-1.8%	5.6%	-4.1%	4.8%	2.4%
High Street Index - BDSU (BDSU - Comparison)	2.5%	-1.0%	4.0%	-0.6%	5.0%	4.9%
High Street Index (Regional City)	2.7%	0.1%	4.1%	0.1%	6.3%	6.2%
UK	1.4%	-0.8%	4.1%	-2.4%	4.5%	3.2%

Benchmark calculations (Year on Year and Month on Month) have been calculated using like for like data sets (only those counters available in both comparison periods) to ensure statistical accuracy

Headlines

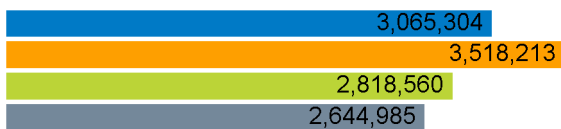
The total number of visitors for the year to date is 12,633,528 which is 4.9% up on the previous year.

The total number of visitors to Manchester BID in month commencing 6 April 2025 was 3,065,304.

The busiest day in month commencing 6 April 2025 was Saturday 3 May with 149,626 visitors.

The peak hour of the month was 13:00 on Saturday 3 May 2025 with footfall of 17,237.

Footfall Counts by month



■ This Month ■ Previous Year
■ Previous Month ■ 2 Years Ago

Figures shown below are calculated using monthly totals.

Weather



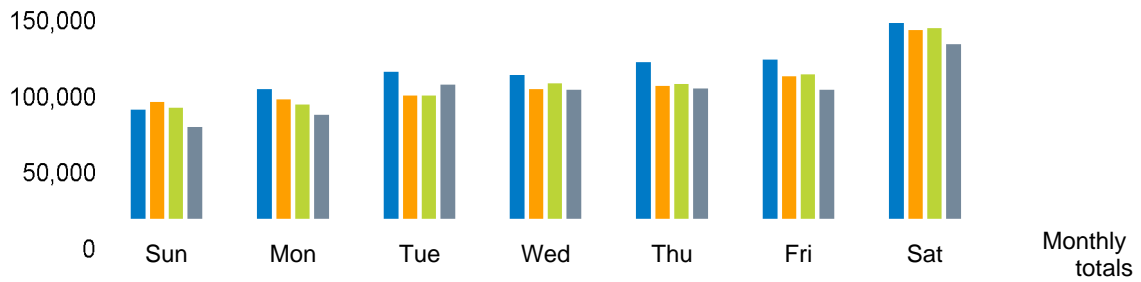
Number of days this month	20	7	1
Number of days same month last year	6	18	4
Number of days same month two years ago	10	10	8

Average temperature

	Maximum temperature	Minimum temperature
2025	19°	6°
2024	15°	5°
2023	14°	6°

Footfall Counts by day

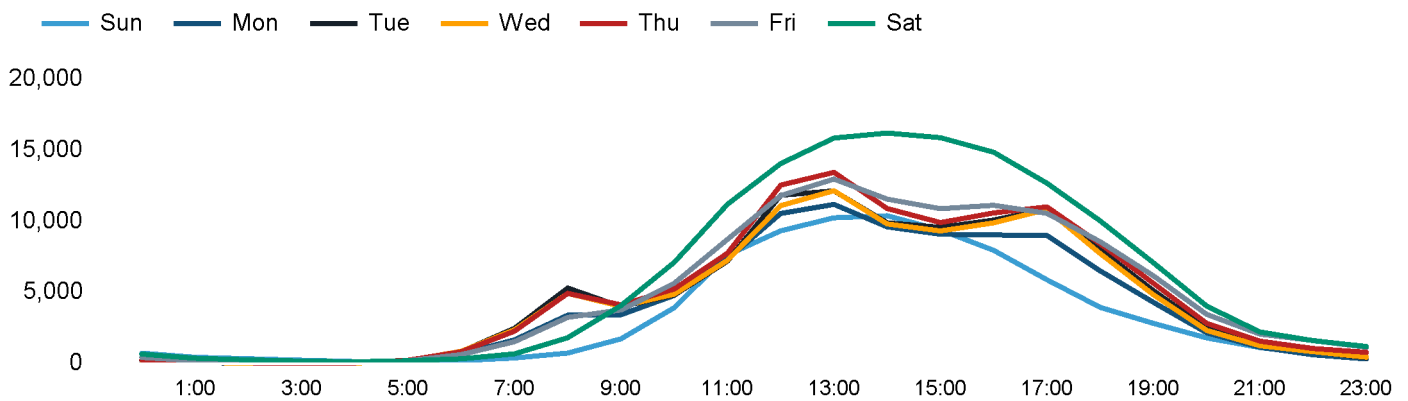
The figures shown below are calculated using weekly averages.



This Month	81,128	96,005	108,158	105,900	115,040	116,987	143,108	766,326
Previous Month	86,883	88,532	91,122	95,860	98,121	105,265	137,859	703,642
Previous Year	82,824	85,146	91,196	100,135	99,728	106,527	139,084	704,640
2 Years Ago	69,179	77,695	99,177	95,671	96,277	95,291	127,956	661,246
Month on month %	-6.6%	8.4%	18.7%	10.5%	17.2%	11.1%	3.8%	
Year on year %	-2.0%	12.8%	18.6%	5.8%	15.4%	9.8%	2.9%	

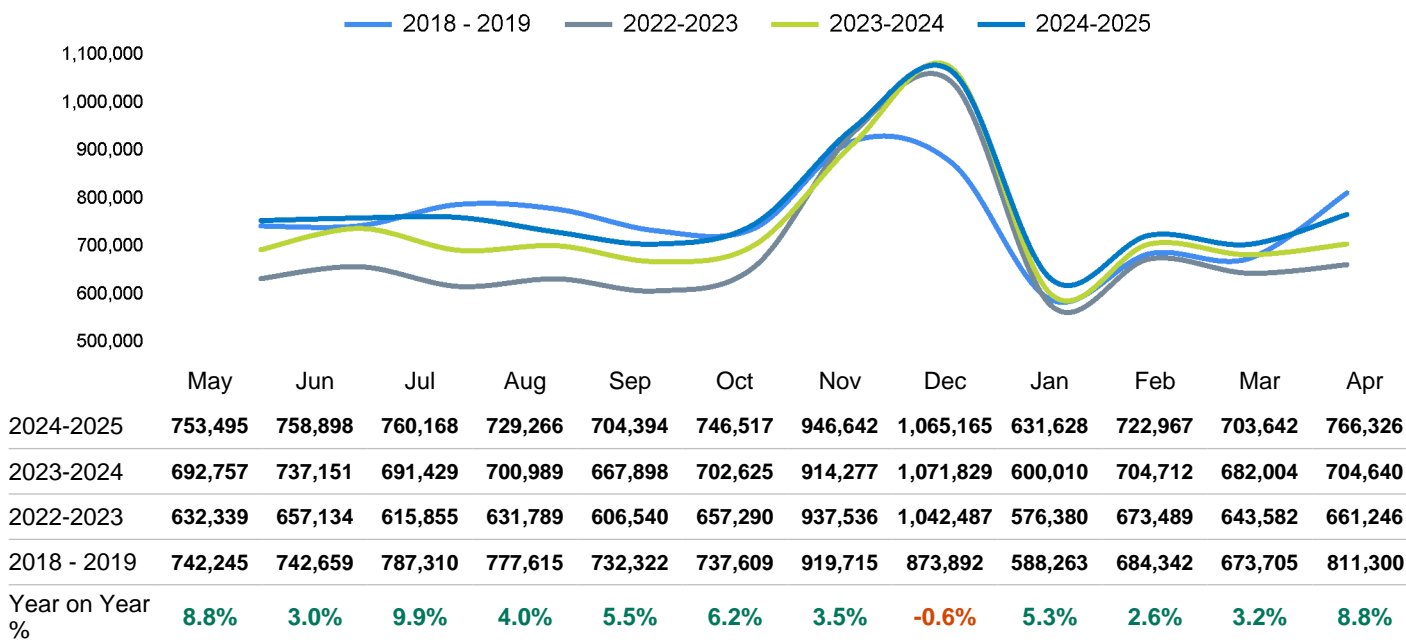
Footfall Counts by hour

The figures shown below are calculated using a weekly average



Footfall Counts - rolling 12 months

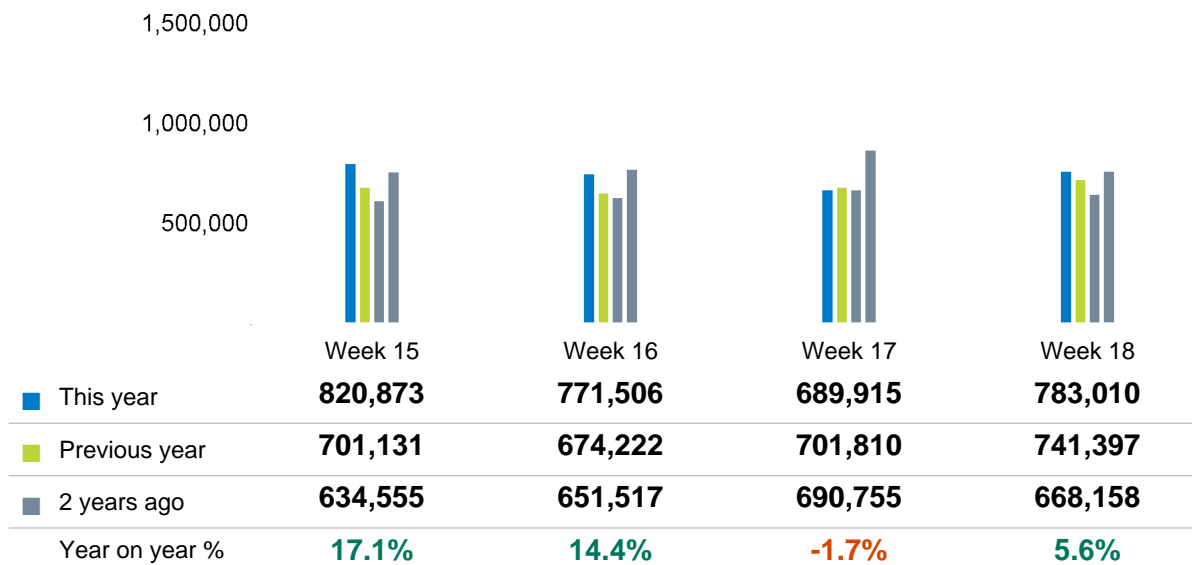
The figures shown below are calculated using weekly averages.



Year on year % is calculated by comparing the 2024-2025 period with the 2023-2024 period i.e the figure for April compares April 2025 to April 2024

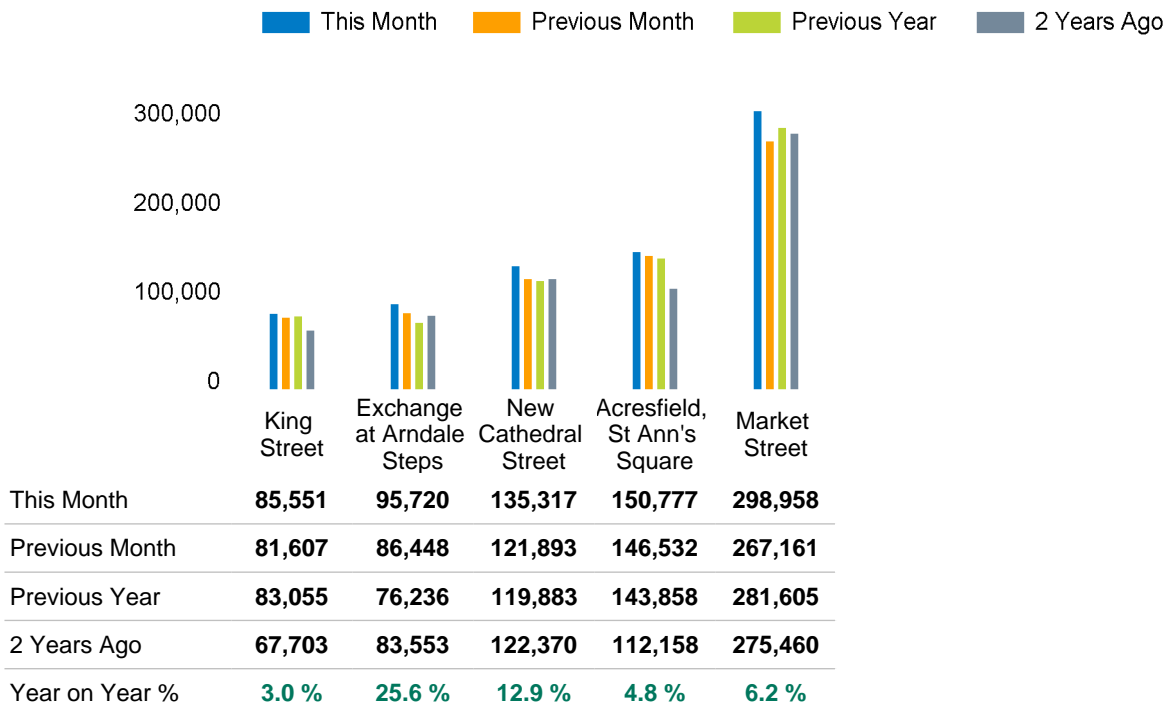
Footfall Counts by week of month

The figures shown below are calculated using weekly totals.

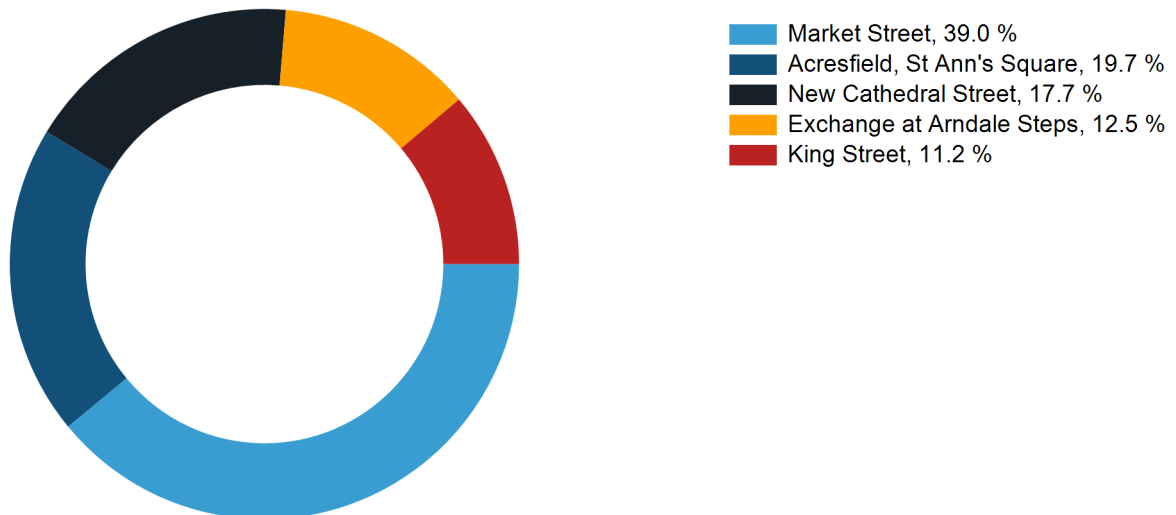


Footfall Counts by location

The figures shown below are calculated using weekly averages.



Footfall Counts by location



Reporting dates

This month - 06 April 2025 - 03 May 2025

Year to Date % Change is the annual % change in footfall from January of this year compared to the same period last year. January, 2025 to April, 2025 Vs January, 2024 to April, 2024

Year on Year % Change is the % change in footfall for this month compared to the same week in the previous year. April, 2025 Vs April, 2024

Month on Month % Change is the % change in footfall for this Month from the previous Month. 4 2025 Vs 3 2025

