

# Footfall Report for: Manchester BID

Weeks This Month: 4  
Weeks Last Month: 4

## Monthly Footfall Counts

	Year to date %		Year on year %		Month on month %	
	2024	2023	2024	2023	2024	2023
Manchester BID	-0.1%	16.0%	2.7%	9.6%	9.1%	1.8%
North & Yorkshire	-2.0%	1.6%	-3.1%	1.8%	5.5%	4.5%
High Street Index - BDSU (BDSU - Comparison)	-0.9%	10.7%	-0.5%	4.9%	3.9%	3.5%
High Street Index (Regional City)	0.1%	15.5%	0.2%	7.9%	3.3%	2.7%
UK	-0.8%	7.0%	-1.2%	4.4%	5.1%	3.6%

Benchmark calculations (Year on Year and Month on Month) have been calculated using like for like data sets (only those counters available in both comparison periods) to ensure statistical accuracy

## Headlines

The total number of visitors for the year to date is 13,534,184 which is 0.1% down on the previous year.

The total number of visitors to Manchester BID in month commencing 28 April 2024 was 2,847,031.

The busiest day in month commencing 28 April 2024 was Saturday 25 May with 166,478 visitors.

The peak hour of the month was 13:00 on Saturday 25 May 2024 with footfall of 18,822.

## Footfall Counts by month



■ This Month      ■ Previous Year  
■ Previous Month      ■ 2 Years Ago

Figures shown below are calculated using monthly totals.

## Weather



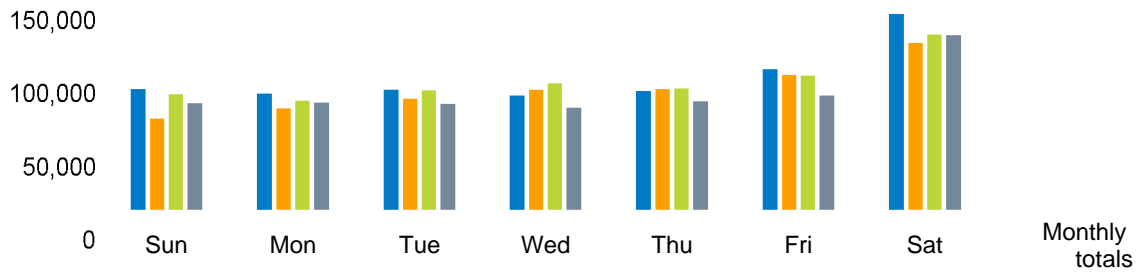
	Sun	Cloud	Rain	Wind
Number of days this month	11	13	4	
Number of days same month last year	13	10	4	1
Number of days same month two years ago	5	7	16	

## Average temperature

	Maximum temperature	Minimum temperature
2024	20°	10°
2023	18°	9°
2022	17°	9°

## Footfall Counts by day

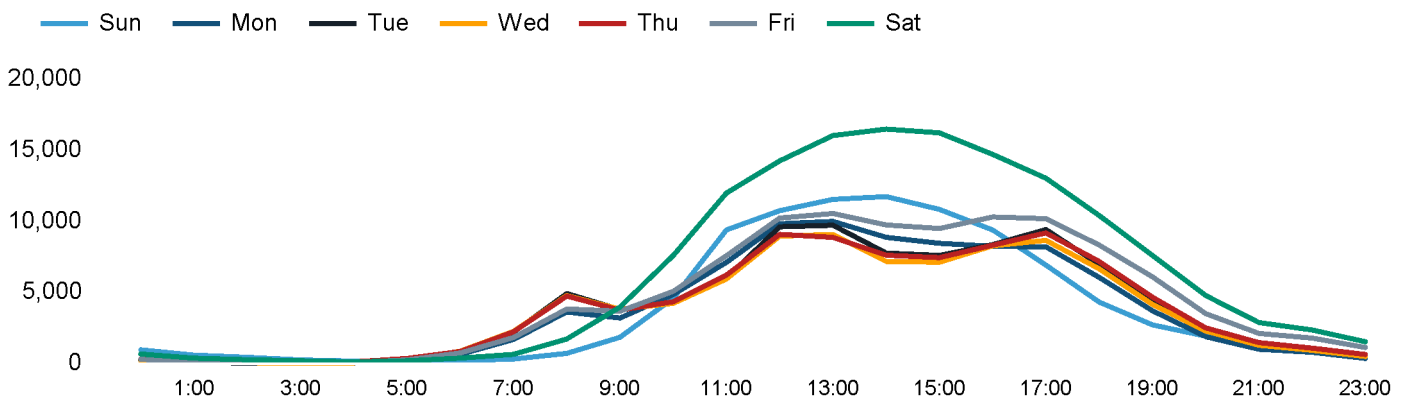
The figures shown below are calculated using weekly averages.



This Month	93,227	89,897	92,411	88,158	91,682	107,585	148,797	711,757
Previous Month	71,361	78,771	86,126	92,439	93,060	103,503	127,045	652,305
Previous Year	89,086	84,731	92,086	97,362	93,333	102,825	133,334	692,757
2 Years Ago	82,534	83,108	82,259	79,504	84,088	88,115	132,731	632,339
Month on month %	30.6%	14.1%	7.3%	-4.6%	-1.5%	3.9%	17.1%	
Year on year %	4.6%	6.1%	0.4%	-9.5%	-1.8%	4.6%	11.6%	

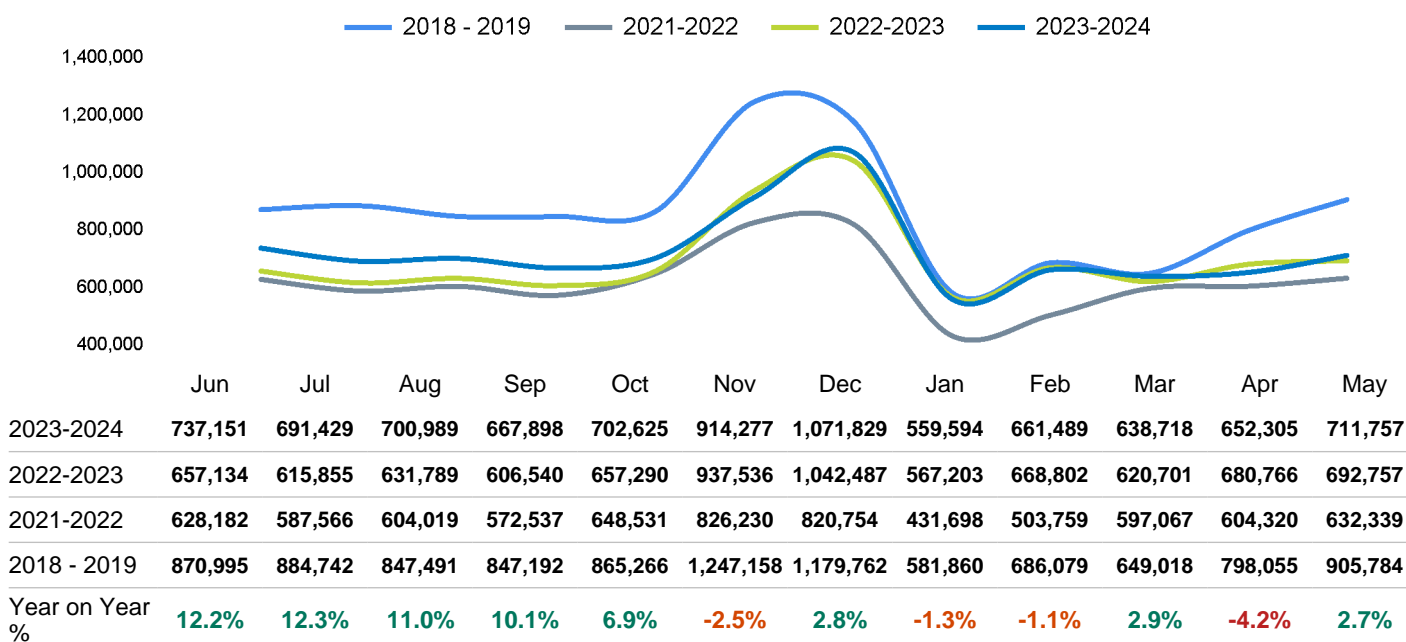
## Footfall Counts by hour

The figures shown below are calculated using a weekly average



## Footfall Counts - rolling 12 months

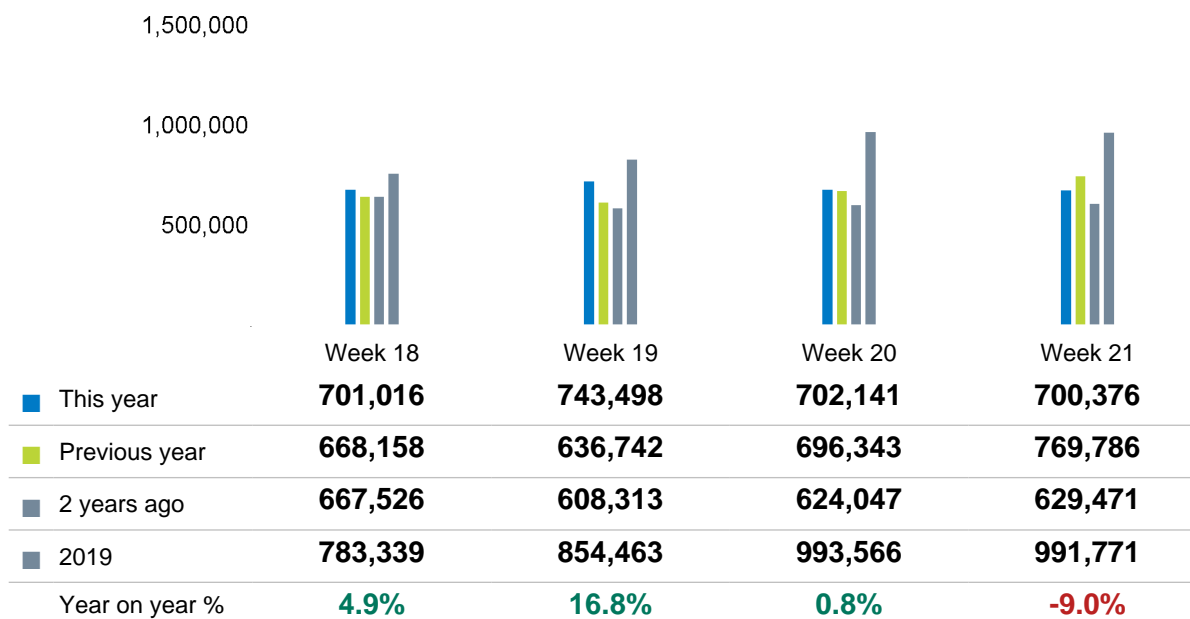
The figures shown below are calculated using weekly averages.



Year on year % is calculated by comparing the 2023-2024 period with the 2022-2023 period i.e the figure for May compares May 2024 to May 2023

## Footfall Counts by week of month

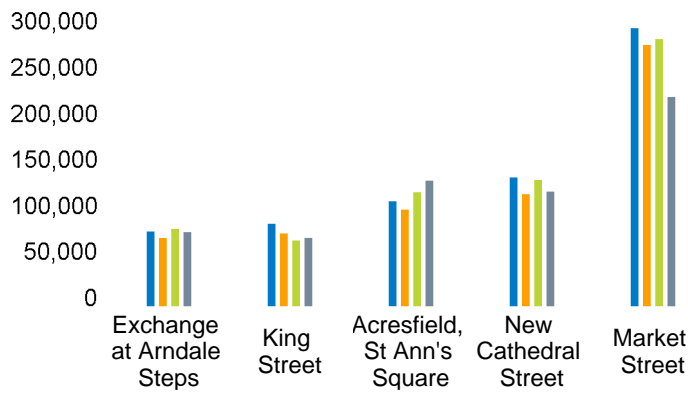
The figures shown below are calculated using weekly totals.



## Footfall Counts by location

The figures shown below are calculated using weekly averages.

■ This Month   
 ■ Previous Month   
 ■ Previous Year   
 ■ 2 Years Ago



	Exchange at Arndale Steps	King Street	Acresfield, St Ann's Square	New Cathedral Street	Market Street
This Month	82,014	90,185	112,797	137,310	289,450
Previous Month	75,316	80,406	104,138	120,244	272,199
Previous Year	84,830	73,044	121,816	134,356	278,709
2 Years Ago	81,115	75,680	133,632	122,787	219,124
Year on Year %	-3.3 %	23.5 %	-7.4 %	2.2 %	3.9 %

## Footfall Counts by location



- Market Street, 40.7 %
- New Cathedral Street, 19.3 %
- Acresfield, St Ann's Square, 15.8 %
- King Street, 12.7 %
- Exchange at Arndale Steps, 11.5 %



## Reporting dates

---

This month - 28 April 2024 - 25 May 2024

Year to Date % Change is the annual % change in footfall from January of this year compared to the same period last year. January, 2024 to May, 2024 Vs January, 2023 to May, 2023

Year on Year % Change is the % change in footfall for this month compared to the same week in the previous year. May, 2024 Vs May, 2023

Month on Month % Change is the % change in footfall for this Month from the previous Month. 5 2024 Vs 4 2024

