

Footfall Report for: Manchester BID

Weeks This Month: 4
Weeks Last Month: 4

Monthly Footfall Counts

	Year to date % YoY		This month % YoY		This month % MoM	
	2026	2025	2026	2025	2026	2025
Manchester BID	-4.3%	3.8%	-5.1%	-0.5%	-2.0%	1.6%
North & Yorkshire	-3.2%	1.4%	-3.7%	-0.3%	-0.3%	0.5%
High Street Index (Regional City)	0.3%	2.4%	-0.1%	1.1%	-1.2%	-0.4%
High Street Index - BDSU (BDSU - Comparison)	0.1%	2.2%	-0.3%	0.7%	-0.7%	0.4%
UK	-2.0%	1.0%	-1.9%	-1.1%	0.4%	0.5%

Benchmark calculations (Year on Year and Month on Month) have been calculated using like for like data sets (only those counters available in both comparison periods) to ensure statistical accuracy

Headlines

The total number of visitors for the year to date is 14,446,360 which is 4.3% down on the previous year.

The total number of visitors to Manchester BID in month commencing 3 May 2026 was 2,957,069.

The busiest day in month commencing 3 May 2026 was Saturday 23 May with 173,767 visitors.

The peak hour of the month was 14:00 on Saturday 23 May 2026 with footfall of 20,286.

Footfall Counts by month






■ This Month ■ Previous Year
■ Previous Month ■ 2 Years Ago

Figures shown below are calculated using monthly totals.

Weather



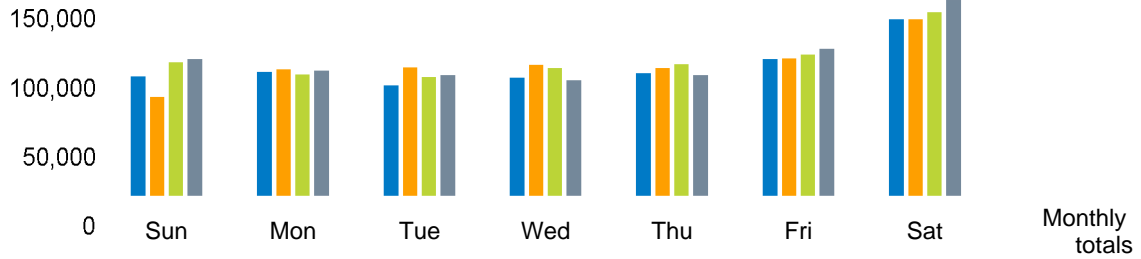
			
Number of days May 2026	13	14	1
Number of days May 2025	16	11	1
Number of days May 2024	10	15	3

Average temperature

	Maximum temperature	Minimum temperature
2026	20°	9°
2025	21°	8°
2024	21°	11°

Footfall Counts by day

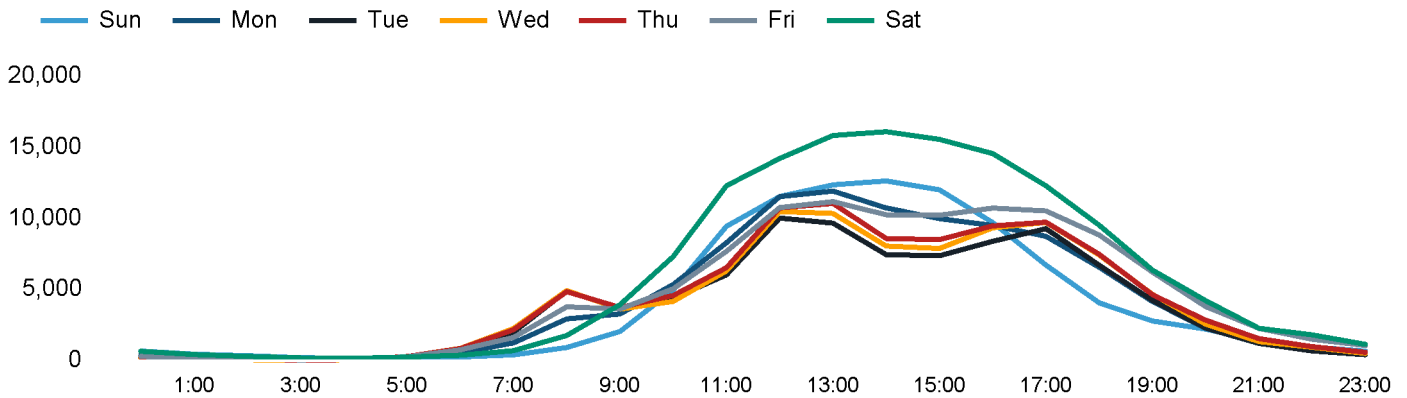
The figures shown below are calculated using weekly averages.



This Month	97,439	101,030	90,598	96,416	100,061	111,211	142,512	739,267
Previous Month	81,317	103,149	104,914	106,686	103,987	111,857	142,334	754,244
Previous Year	108,532	98,986	97,074	104,150	107,331	114,643	148,058	778,774
2 Years Ago	111,290	101,961	98,876	94,756	98,688	119,069	157,692	782,332
Month on month %	19.8%	-2.1%	-13.6%	-9.6%	-3.8%	-0.6%	0.1%	
Year on year %	-10.2%	2.1%	-6.7%	-7.4%	-6.8%	-3.0%	-3.7%	

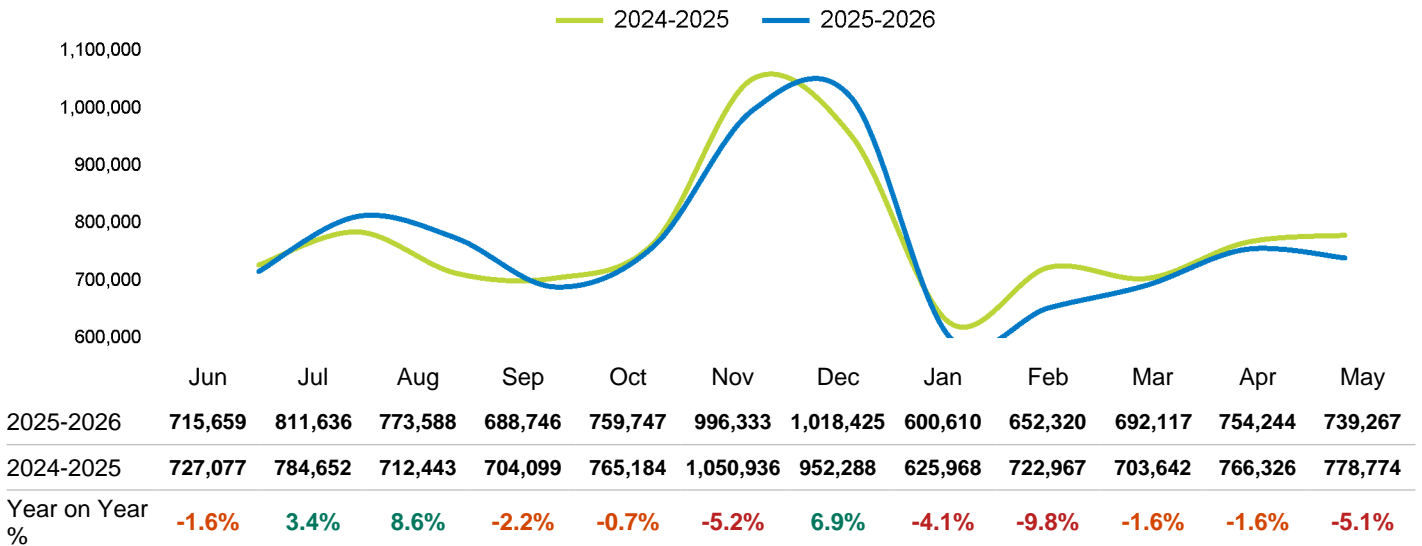
Footfall Counts by hour

The figures shown below are calculated using a weekly average



Footfall Counts - rolling 12 months

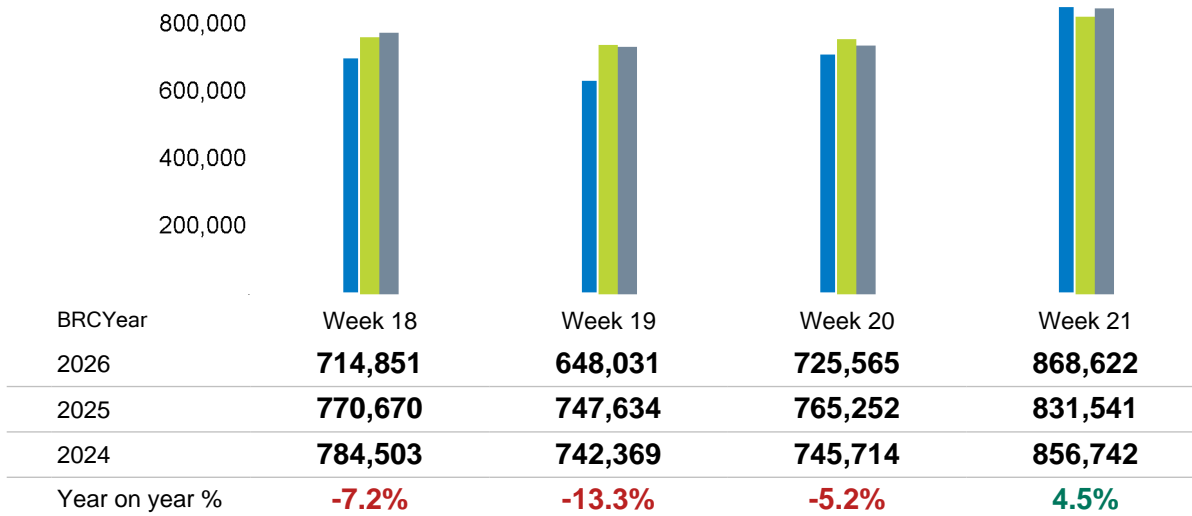
The figures shown below are calculated using weekly averages.



Year on year % is calculated by comparing the 2025-2026 period with the 2024-2025 period i.e the figure for May compares May 2026 to May 2025

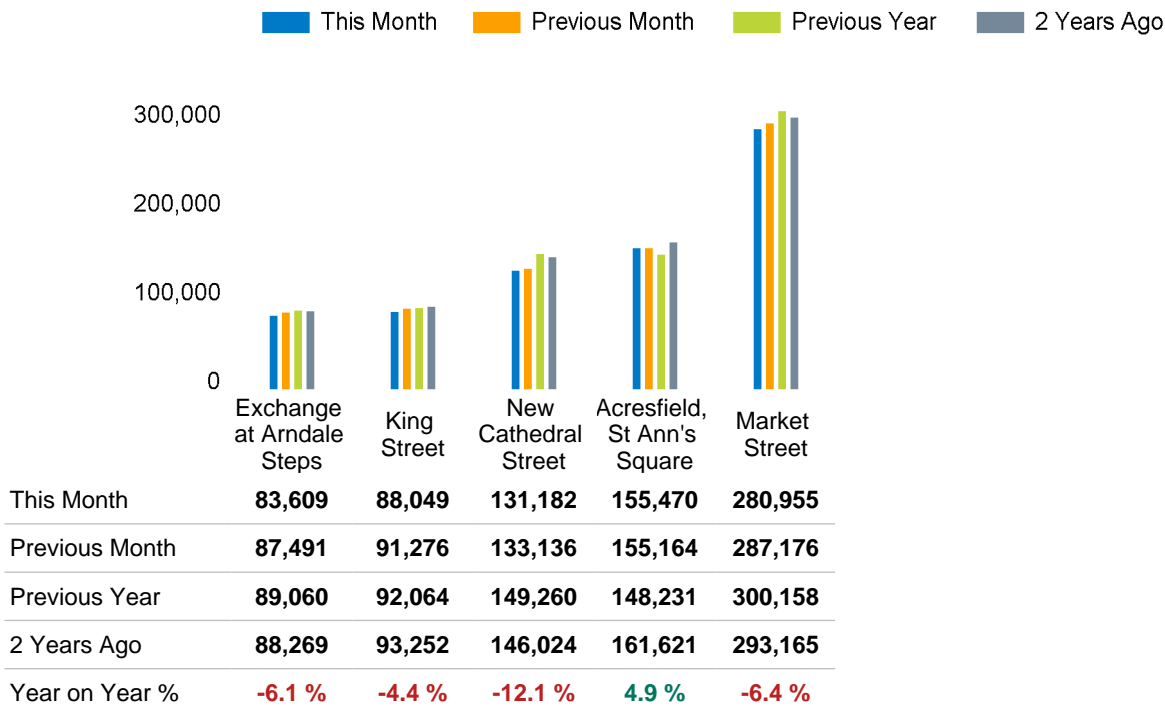
Footfall Counts by week of month

The figures shown below are calculated using weekly totals.

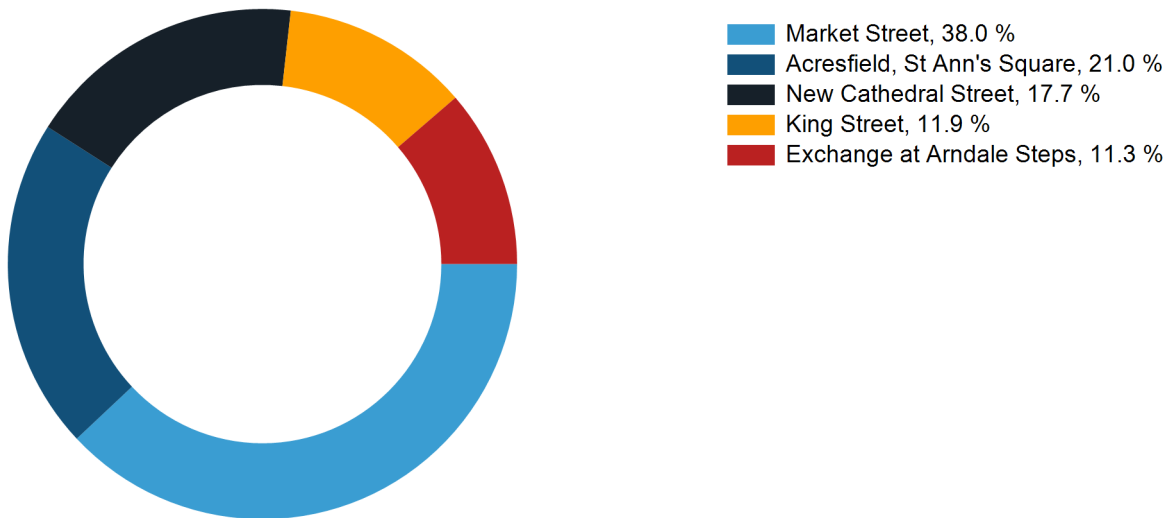


Footfall Counts by location

The figures shown below are calculated using weekly averages.



Footfall Counts by location



Reporting dates

This month - 03 May 2026 - 30 May 2026

Year to Date % change is the annual % change in footfall from the start the current reporting year compared to the same period last year.
04 January 2026 - 30 May 2026 vs 05 January 2025 - 31 May 2025

Year on year % change is the % change for this month compared to the same month in the previous year.
03 May 2026 - 30 May 2026 vs 04 May 2025 - 31 May 2025

Month on month % change is the % change for this month compared to the previous month.
03 May 2026 - 30 May 2026 vs 05 April 2026 - 02 May 2026

