

# Footfall Report for: Manchester BID

Weeks This Month: 5  
Weeks Last Month: 4

## Monthly Footfall Counts

	Year to date %		Year on year %		Month on month %	
	2024	2023	2024	2023	2024	2023
Manchester BID	-0.6%	15.2%	-2.7%	12.2%	0.8%	6.4%
North & Yorkshire	-2.3%	1.9%	-3.2%	3.0%	1.9%	3.4%
High Street Index - BDSU (BDSU - Comparison)	-0.7%	9.3%	0.2%	5.0%	3.4%	3.7%
High Street Index(Regional City)	0.2%	13.7%	0.5%	7.9%	3.1%	3.7%
UK	-1.0%	6.6%	-2.3%	5.2%	3.1%	4.5%

Benchmark calculations (Year on Year and Month on Month) have been calculated using like for like data sets (only those counters available in both comparison periods) to ensure statistical accuracy

## Headlines

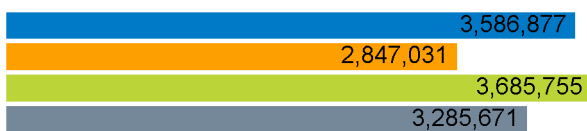
The total number of visitors for the year to date is 17,121,061 which is 0.6% down on the previous year.

The total number of visitors to Manchester BID in month commencing 26 May 2024 was 3,586,877.

The busiest day in month commencing 26 May 2024 was Saturday 22 June with 142,482 visitors.

The peak hour of the month was 15:00 on Saturday 1 June 2024 with footfall of 16,373.

## Footfall Counts by month



■ This Month      ■ Previous Year  
■ Previous Month      ■ 2 Years Ago

Figures shown below are calculated using monthly totals.

## Weather



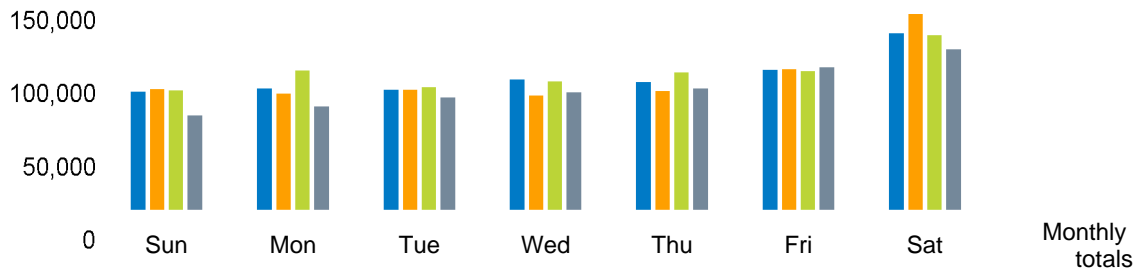
Number of days this month	13	22	
Number of days same month last year	21	8	6
Number of days same month two years ago	9	6	20

## Average temperature

	Maximum temperature	Minimum temperature
2024	20°	10°
2023	23°	12°
2022	19°	11°

## Footfall Counts by day

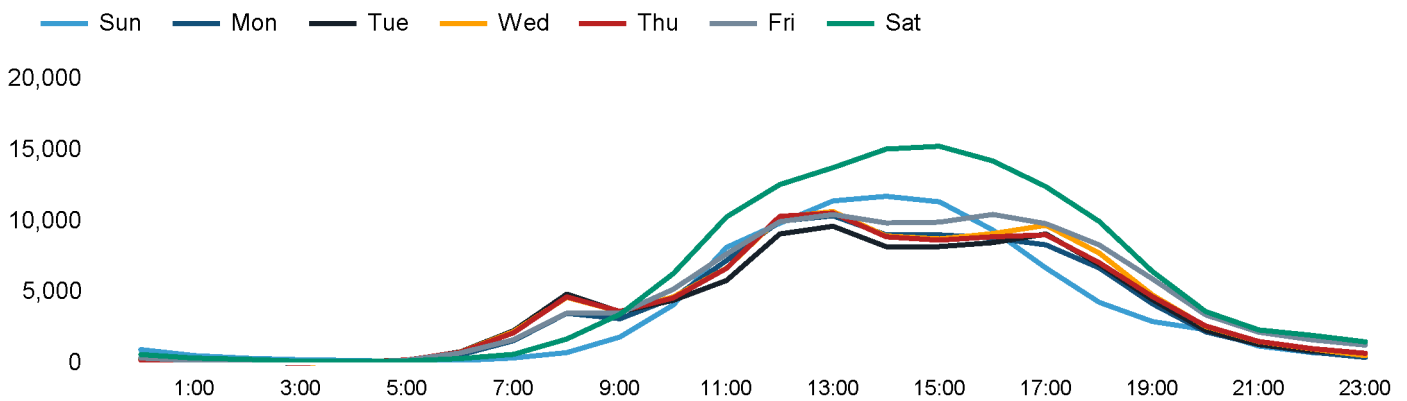
The figures shown below are calculated using weekly averages.



This Month	91,202	93,467	92,715	99,987	98,153	107,447	134,404	717,375
Previous Month	93,227	89,897	92,411	88,158	91,682	107,585	148,797	711,757
Previous Year	92,048	107,019	94,274	98,817	105,548	106,302	133,143	737,151
2 Years Ago	73,433	80,466	87,012	90,758	93,669	109,421	122,375	657,134
Month on month %	-2.2%	4.0%	0.3%	13.4%	7.1%	-0.1%	-9.7%	
Year on year %	-0.9%	-12.7%	-1.7%	1.2%	-7.0%	1.1%	0.9%	

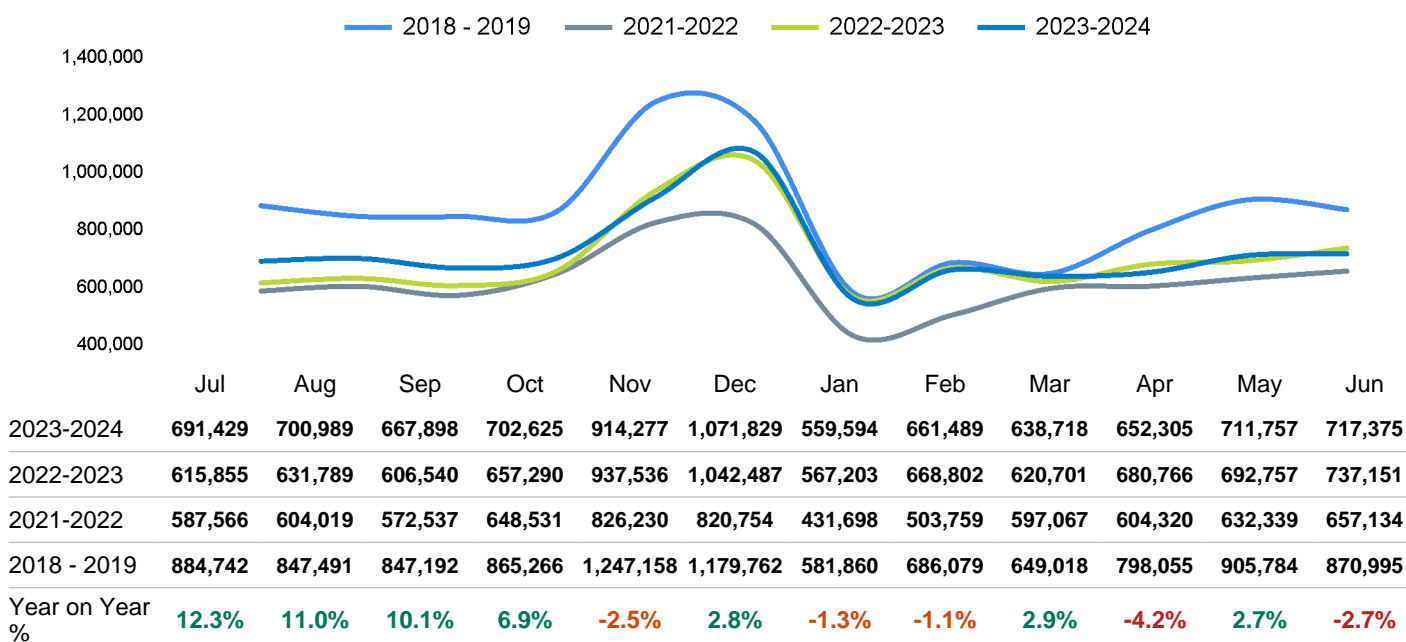
## Footfall Counts by hour

The figures shown below are calculated using a weekly average



## Footfall Counts - rolling 12 months

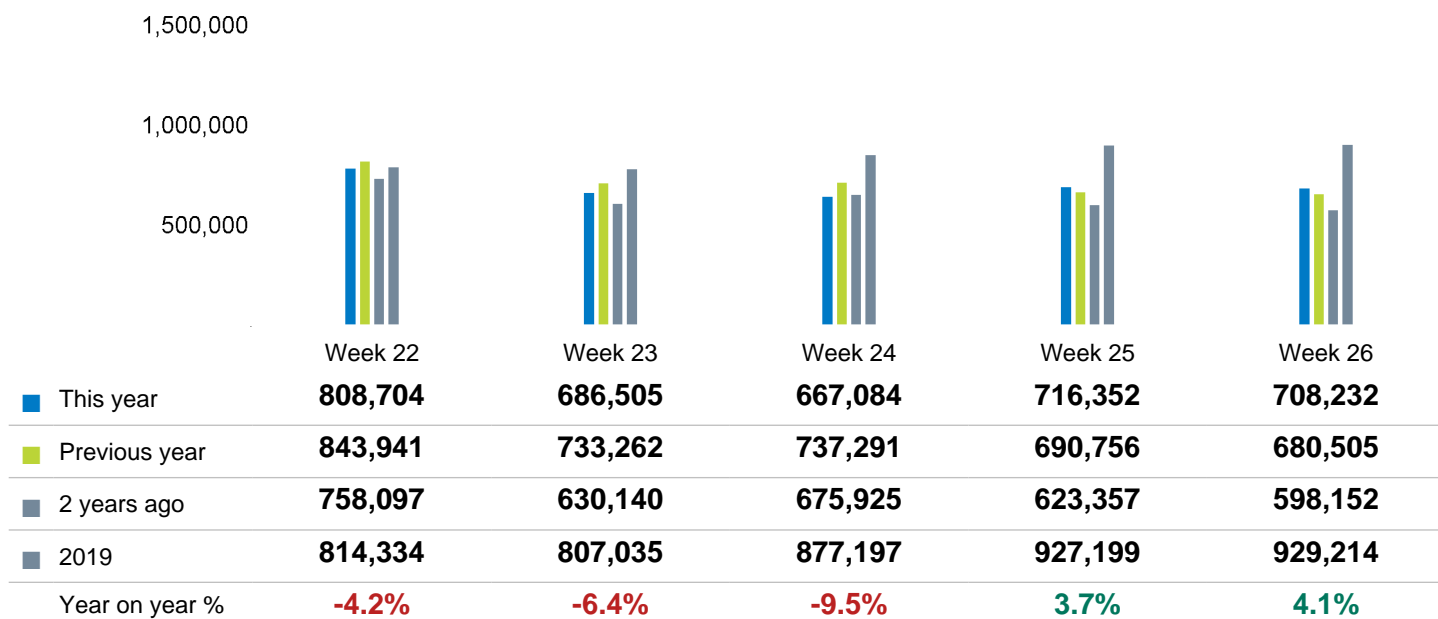
The figures shown below are calculated using weekly averages.



Year on year % is calculated by comparing the 2023-2024 period with the 2022-2023 period i.e the figure for June compares June 2024 to June 2023

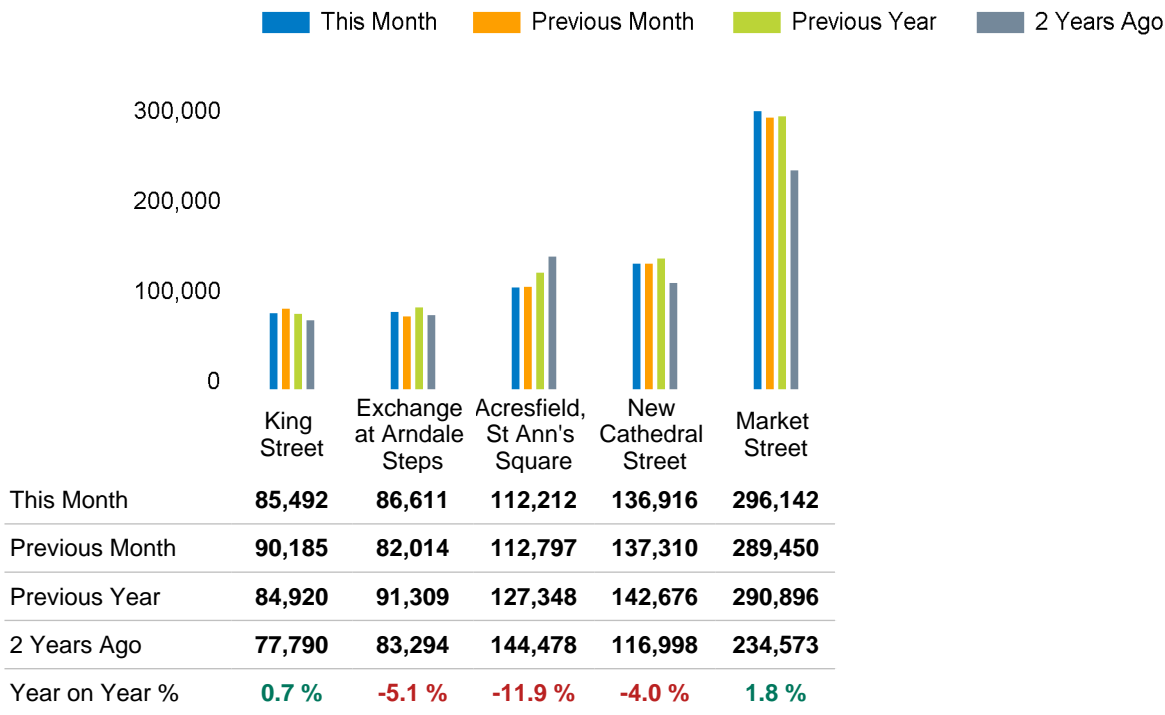
## Footfall Counts by week of month

The figures shown below are calculated using weekly totals.



## Footfall Counts by location

The figures shown below are calculated using weekly averages.



## Footfall Counts by location



- Market Street, 41.3 %
- New Cathedral Street, 19.1 %
- Acresfield, St Ann's Square, 15.6 %
- Exchange at Arndale Steps, 12.1 %
- King Street, 11.9 %



## Reporting dates

---

This month - 26 May 2024 - 29 June 2024

Year to Date % Change is the annual % change in footfall from January of this year compared to the same period last year. January, 2024 to June , 2024 Vs January, 2023 to June , 2023

Year on Year % Change is the % change in footfall for this month compared to the same week in the previous year. June, 2024 Vs June, 2023

Month on Month % Change is the % change in footfall for this Month from the previous Month. 6 2024 Vs 5 2024

