

Footfall Report for: Manchester BID

Weeks This Month: 4
Weeks Last Month: 5

Monthly Footfall Counts

	Year to date %		Year on year %		Month on month %	
	2024	2023	2024	2023	2024	2023
Manchester BID	0.0%	13.0%	0.7%	6.9%	5.7%	5.2%
North & Yorkshire	-1.5%	0.6%	-0.9%	-3.1%	-1.4%	-2.3%
High Street Index - BDSU (BDSU - Comparison)	-0.2%	5.8%	1.3%	-2.8%	3.6%	0.8%
High Street Index(Regional City)	0.3%	9.4%	1.2%	-0.4%	3.8%	1.2%
UK	-0.8%	3.9%	-0.8%	-2.0%	-0.1%	-1.1%

Benchmark calculations (Year on Year and Month on Month) have been calculated using like for like data sets (only those counters available in both comparison periods) to ensure statistical accuracy

Headlines

- The total number of visitors for the year to date is 28,937,966 which is 0% up on the previous year.
- The total number of visitors to Manchester BID in month commencing 29 September 2024 was 2,829,336.
- The busiest day in month commencing 29 September 2024 was Saturday 26 October with 169,338 visitors.
- The peak hour of the month was 14:00 on Saturday 26 October 2024 with footfall of 20,090.

Footfall Counts by month



■ This Month ■ Previous Year
■ Previous Month ■ 2 Years Ago

Figures shown below are calculated using monthly totals.

Weather



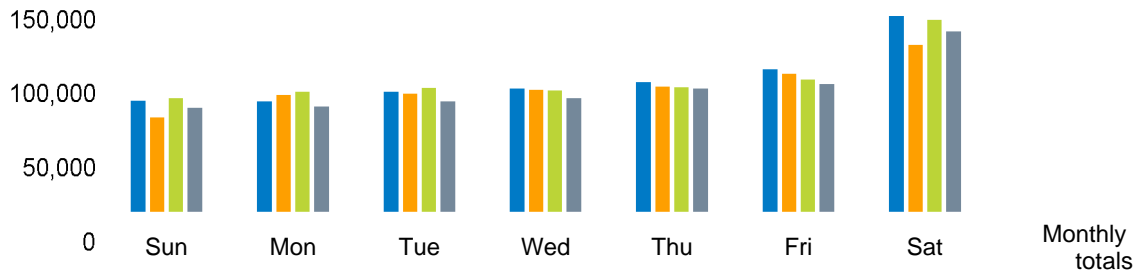
	Sun	Cloud	Rain	Menu
Number of days this month	15	12	1	
Number of days same month last year	11	12	4	1
Number of days same month two years ago	14	8	4	2

Average temperature

	Maximum temperature	Minimum temperature
2024	16°	7°
2023	17°	8°
2022	16°	9°

Footfall Counts by day

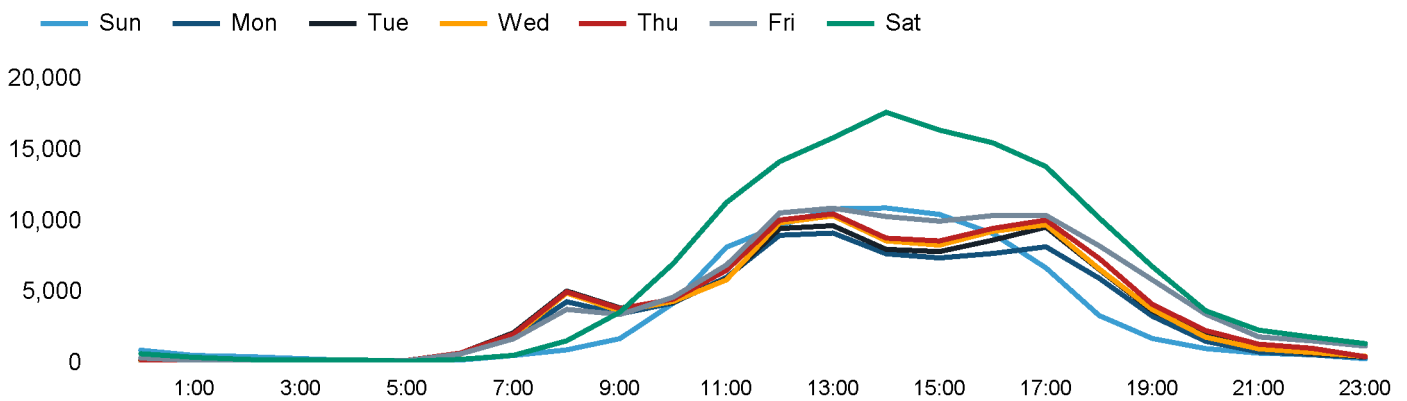
The figures shown below are calculated using weekly averages.



This Month	84,774	84,180	91,426	93,700	98,541	107,938	146,775	707,334
Previous Month	72,545	88,975	89,990	92,916	95,196	104,448	125,422	669,492
Previous Year	86,499	91,255	94,260	92,515	94,400	100,087	143,609	702,625
2 Years Ago	79,606	80,681	84,428	86,821	93,511	96,991	135,252	657,290
Month on month %	16.9%	-5.4%	1.6%	0.8%	3.5%	3.3%	17.0%	
Year on year %	-2.0%	-7.8%	-3.0%	1.3%	4.4%	7.8%	2.2%	

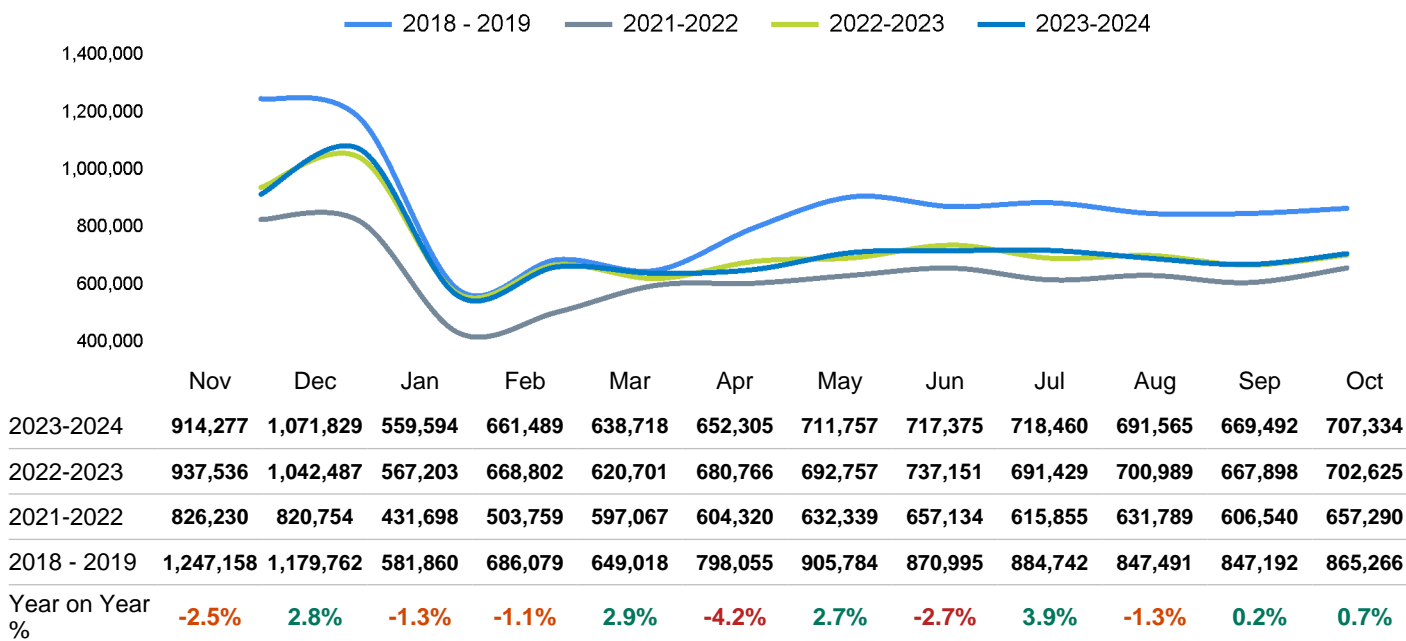
Footfall Counts by hour

The figures shown below are calculated using a weekly average



Footfall Counts - rolling 12 months

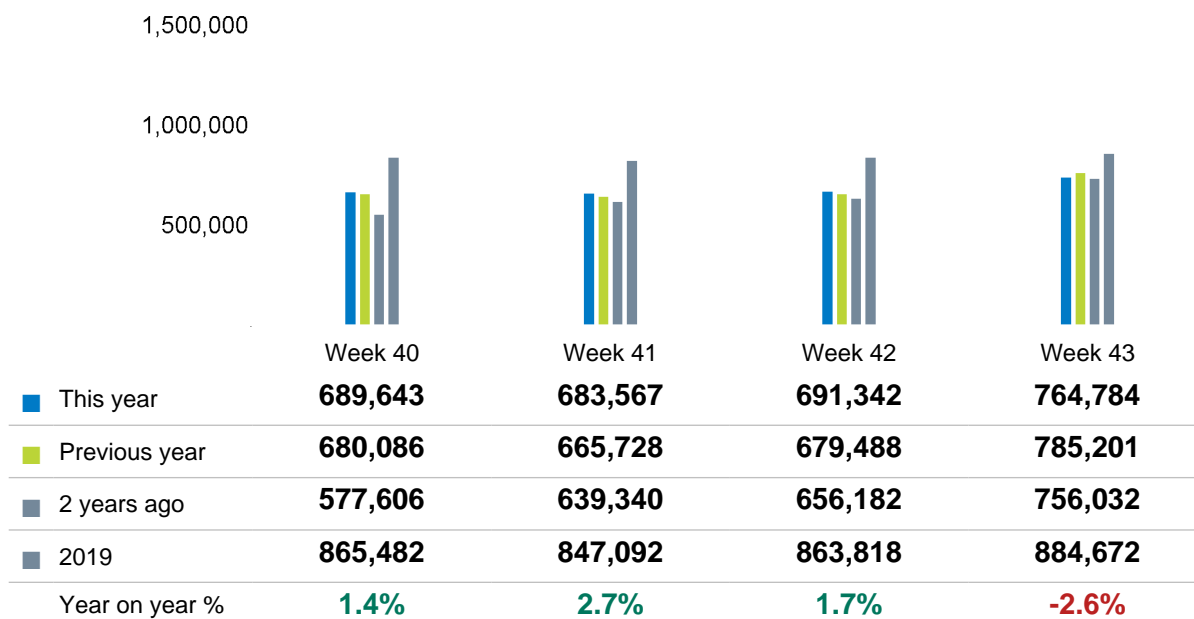
The figures shown below are calculated using weekly averages.



Year on year % is calculated by comparing the 2023-2024 period with the 2022-2023 period i.e the figure for October compares October 2024 to October 2023

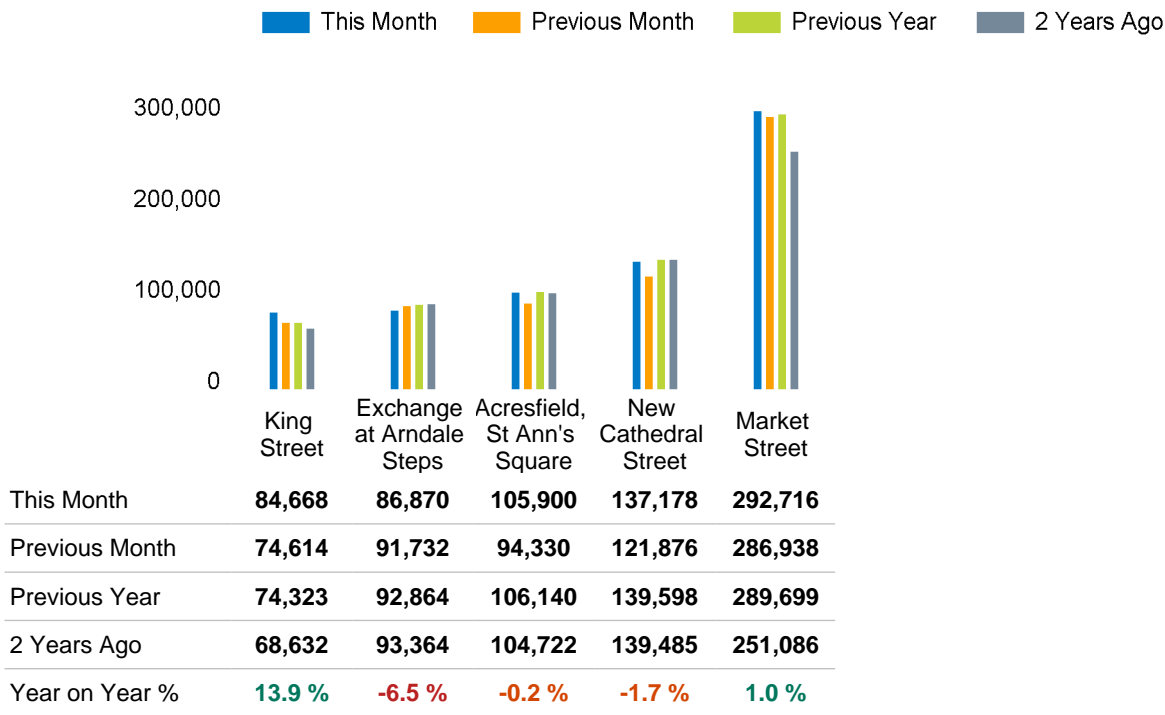
Footfall Counts by week of month

The figures shown below are calculated using weekly totals.

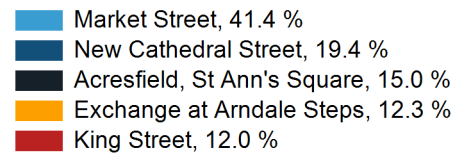


Footfall Counts by location

The figures shown below are calculated using weekly averages.



Footfall Counts by location



Reporting dates

This month - 29 September 2024 - 26 October 2024

Year to Date % Change is the annual % change in footfall from January of this year compared to the same period last year. January, 2024 to October , 2024 Vs January, 2023 to October , 2023

Year on Year % Change is the % change in footfall for this month compared to the same week in the previous year. October, 2024 Vs October, 2023

Month on Month % Change is the % change in footfall for this Month from the previous Month. 10 2024 Vs 9 2024

