

Wednesday 18th – Saturday 21st
February 2026

Your guide to the
Super Duper Family Festival

Manchester presents
the SUPER DUPER
family festival

Manchester presents
the SUPER DUPER
family festival

Your guide to the
Super Duper Family Festival

Wednesday 18th – Saturday 21st
February 2026

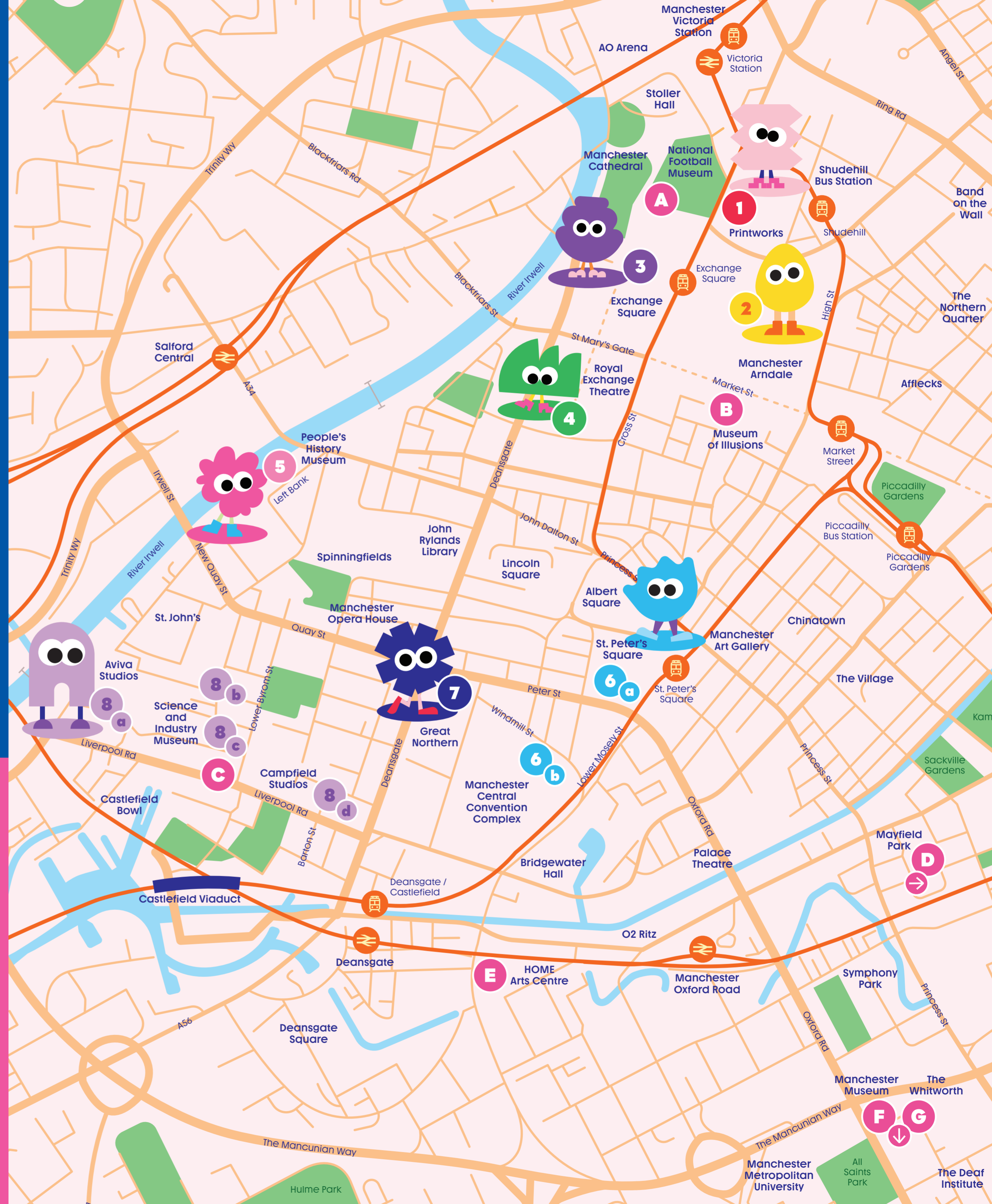
superduperfamilyfestival.com
[@superduperfamilyfestival](https://www.instagram.com/superduperfamilyfestival)

PLAY

- 1 The Arcade – Printworks, Withy Grove, M4 2BS
- 2 The Nursery Rhyme Trail – inside Manchester Arndale, M4 3AQ
- 3 The Playground – Exchange Square, M3 1BD
- 4 The Carnival – St Ann's Square, M2 7DH
- 5 The Soapbox – People's History Museum, Left Bank, M3 3ER
- 6 The Story Den –
a) Manchester Central Library, St Peter's Square, M2 5PD
b) CBeebies Bedtime Stories Live! at Manchester Central, Windmill Street, M2 3GX (Wed & Thur only)
- 7 The Sports Hall – Great Northern, Deansgate, M3 4EN
- 8 The Studios – St. John's
a) Aviva Studios, M3 4JQ
b) Grape Street, M3 4AP
c) Science and Industry Museum, M3 4JP
d) Campfield Studios, Barton Street, M3 4FP

DISCOVER

- A National Football Museum, M4 3BG
- B Museum of Illusions, M1 1PW
- C Science and Industry Museum, M3 4JP
- D Mayfield Park, M1 2PY
- E HOME Arts Centre, M15 4FN
- F Manchester Museum, M13 9PL
- G The Whitworth, M15 6ER



Manchester presents

the

SUPER DUPER

family festival

Wednesday 18th – Saturday 21st
February 2026

4 days of half term fun across the city!

Explore the FREE play zones with crafts, activities, games, rides, family raves, performances and more!

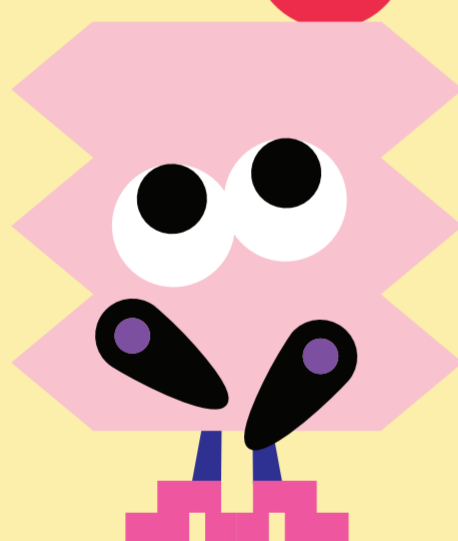
PLAY 8 FREE ZONES

1 THE ARCADE

Step into a world of gaming!

Location: Printworks
10am – 5pm daily

- The largest digital ceiling in Europe
- Arcade-style games



2 THE NURSERY

RHYME TRAIL

A fun-filled family adventure packed with games, music and hands-on activities!

Location: Manchester Arndale
10am – 5pm daily

- Live performances
- Musical games & sing-alongs
- Interactive trail hunt



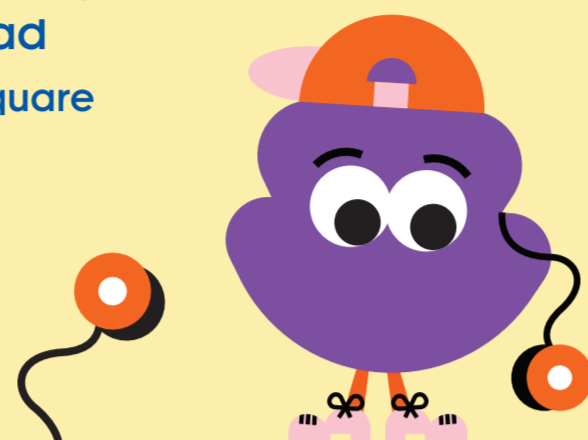
3 THE PLAYGROUND

Come out to play in the pop-up school playground inspired by BBC's Waterloo Road

Location: Exchange Square
10am – 5pm daily

- Mini school disco
- Crafts & activities
- Schoolyard games
- Dress-up

with WATERLOO ROAD



4 THE CARNIVAL

The carnival has come to town!

Location: St Ann's Square
10am – 5pm daily

- Traditional Victorian carousel
- Games & challenges
- Sideshow carnival stalls



5 THE SOAPBOX

Find your voice and be the change

Location: People's History Museum
10am – 5pm daily

- Music workshops
- Dress-up and photo booth
- Banner Bingo
- Badge making
- Family reading & creativity corner



6 THE STORY DEN

Jump off the page and into a real life adventure!

Location: Manchester Central Library
10am – 5pm daily

- Drop-in Lego workshops (10am – 5pm daily)
- Library hunt (10am – 5pm daily)
- Little reads storytime (11am – 11:30am Wed & Sat)
- Crochet club (2pm – 4pm Wed)
- Little movers & shakers (11:15am – 12pm Thur)
- Music crafts (2pm – 4pm Thur)
- Family Film club (1pm – 4pm Fri)
- Teen book club (11am – 12:30pm Sat)
- International Mother Language day activities (1pm – 4pm Sat)



6 THE STORY DEN

Join the stars of CBeebies for live BBC CBeebies Bedtime Stories.

Location: Manchester Central

CBeebies Bedtime Stories
Wed & Thur, Sessions:
10:30am / 11:30am /
1:30pm / 2:30pm

Celebrate the power of storytelling with your family as you snuggle down to enjoy stories and songs with CBeebies friends and surprise guests.

This is a free ticketed event with limited availability, see website for details

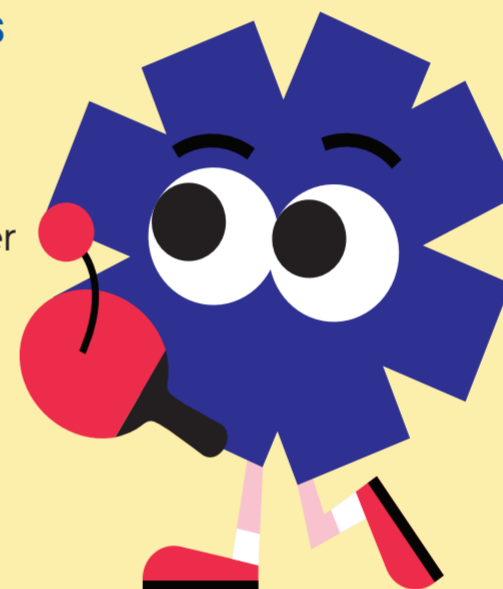


7 THE SPORTS HALL

All your favourite sports under one roof

Location: Great Northern
10am – 5pm daily

- Table football & subsoccer
- Skateboarding (7+ only)
- Scalextric tournaments
- Table tennis
- Super League Basketball
- The Fan Zone with National Football Museum



8 THE STUDIOS

Where multimedia meets mega imagination

Location: Grape Street, 10am – 5pm daily

- The Super Duper movie making challenge
- Crew catering by GRUB
- Manchester Music Mooch workshops

Location: Campfield Studios, Barton Street
10am – 5pm Sat 21st Feb

- Guided tour of the Blue Peter set
- Meet & greet with the Blue Peter team

This is a free ticketed event with limited availability, see website for details

Location: Aviva Studios, 10am – 5pm daily

- Roller studio
- Crafting
- Gaming zone
- Silent disco

Location: Science and Industry Museum, 10am – 5pm daily

- Horrible Science: Cosmic Chaos
- Cosmic dance drop-in
- Meet an Astronomer
- Immersive space exploration



Calm Spaces

Little Northerners at Great Northern
Free play, reading and chill-out area for younger children. 10am – 5pm daily.

The Quiet Zone at Aviva Studios

A tech-free calm space with unplugged art and crafts activities, soft lighting, cosy seating and calming visuals. 10am – 5pm daily.

Quiet Room at People's History Museum

Dedicated small space with soft lighting and calming decor. 10am – 5pm daily.

Toilets and Baby Change

- Manchester Arndale
- Marks & Spencer, Market Street
- Aviva Studios
- Great Northern
- People's History Museum
- Science and Industry Museum
- Manchester Central
- Manchester Central Library

DISCOVER

Discover all the family fun Manchester has to offer this February half term, with activities at our museums, galleries, outdoor spaces, and more.

STAY

Why not make the most of it, and stay over?

With up to 25% off rooms at some of Manchester's most loved family friendly hotels.

SAVE

Snap up some brilliant half term offers from many of Manchester's attractions, retailers and restaurants.

For full event listings and offers please see the website: www.superduperfamilyfestival.com

The Super Duper Family Festival

4 days of half term fun across the city!

Explore 8 FREE play zones with games, rides, dancing, activities, crafts, performances and more to enjoy!

Opening times

10am – 5pm daily

Information point

Visit the Super Duper information point on Exchange Street where our friendly staff are on hand with maps and answers to all your questions.

Lost and Found Children

There is a central lost/found child point on Exchange Street, alternatively speak to a member of the Super Duper team or event venue staff if you need help.

QR code

Scan the qr code with your phone for more information and full event listings.

