



MANCHESTERS  
BUSINESS  
IMPROVEMENT  
DISTRICT

**Manchester HSI**

April 2017

02/04/2017 to 29/04/2017

Sunday to Saturday



REGION - North & Yorkshire

COUNT TYPE: Footfall

**Monthly Footfall**

Benchmark calculations (Year on Year and Month on Month) have been calculated using like for like data sets (only those counters available in both comparison periods) to ensure statistical accuracy

	Year to Date % Change		Year on Year % Change		Month on Month % Change	
	2017	2016	2017	2016	2017	2016
Manchester HSI	▲ 10.1 %	▲ 7.1 %	▲ 8.4 %	▲ 4.7 %	▲ 2.1 %	▲ 4.4 %
North & Yorkshire	▲ 0.8 %	▼ -2.9 %	▲ 2.5 %	▼ -2.7 %	▲ 3.9 %	▲ 7.5 %
High Street Index(Regional City)	▲ 1.7 %	▼ -1.5 %	▲ 0.8 %	▼ -4.2 %	▲ 5.5 %	▲ 6.6 %
UK	▲ 0.3 %	▼ -2.9 %	▲ 2.3 %	▼ -4.7 %	▲ 4.2 %	▲ 5.0 %

**Headlines**

Footfall for the year to date is 10.1% up on the previous year.

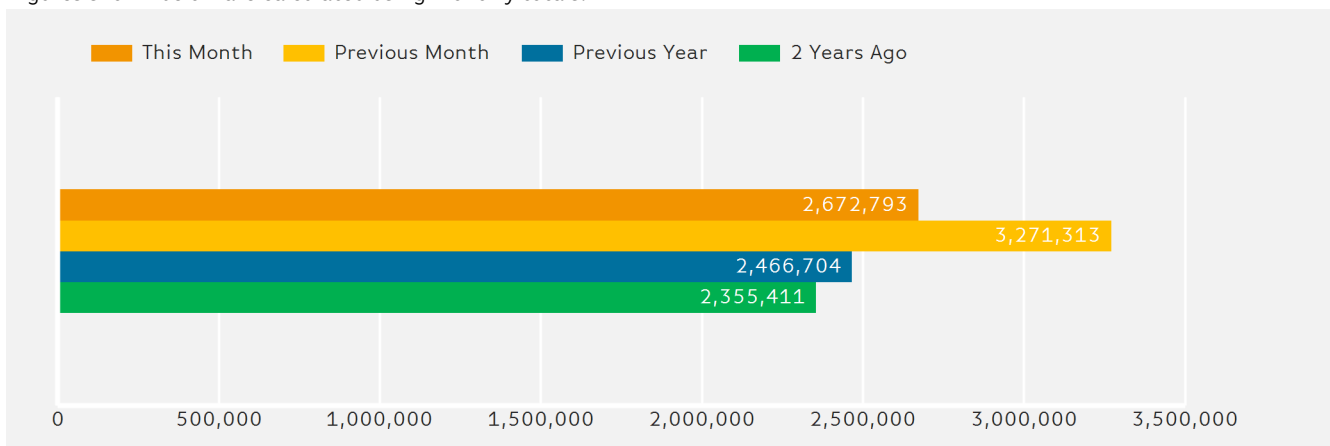
The number of visitors counted for month commencing 2 April 2017 was 2,672,793.

The busiest day in month commencing 2 April 2017 was Saturday 29 April with 130,984 visitors.

The peak hour of the month was 15:00 on Saturday with footfall of 15,594

**Footfall Totals by Month**

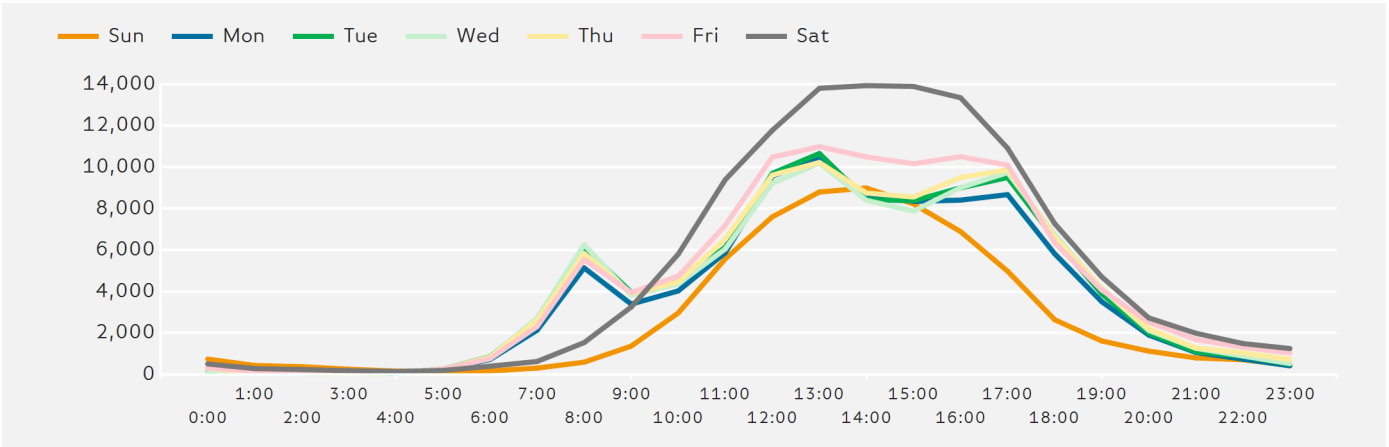
Figures shown below are calculated using monthly totals.



Springboard follows the BRC calendar consisting of complete weeks (Sun- Sat or Mon-Sun) to ensure that the same day is comparable each week. Each month is compiled from a set of full weeks which results in a calendar of a 4 week month, 4 week month, 5 week month pattern.

### Footfall by Hour

The figures shown below are calculated using a weekly average



### Weather



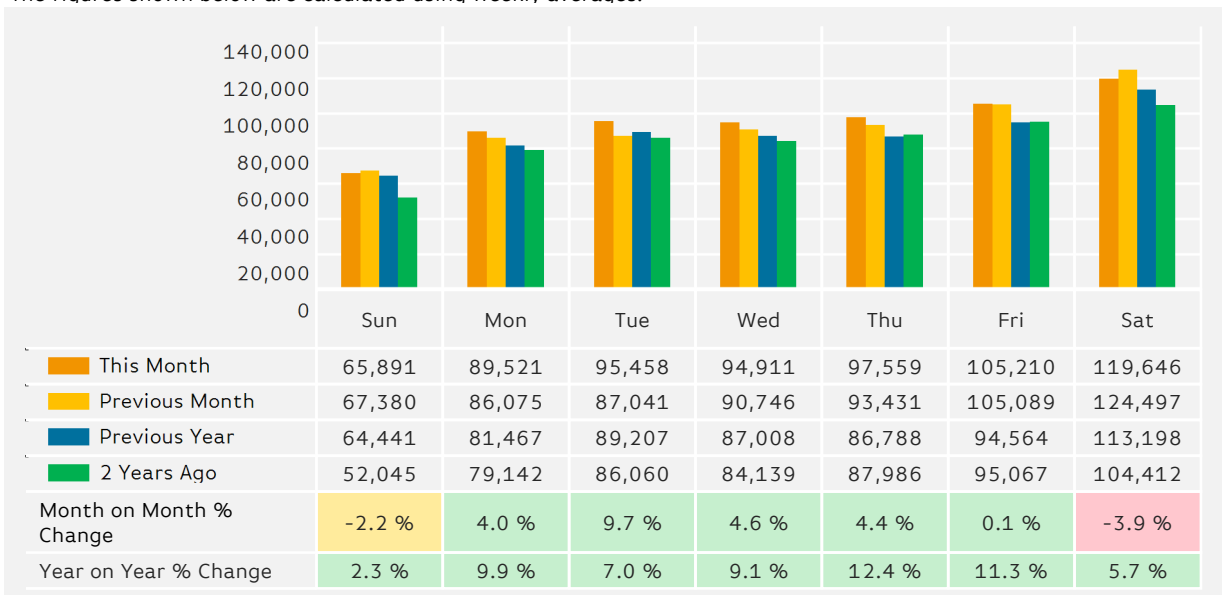
Number of days this month	8	18	2
Number of days same month last year	19	6	3

### Average Temperature

Average Temperatures	Maximum Temperature	Minimum Temperature
2017	12.3	4.6
2016	11.4	2.9

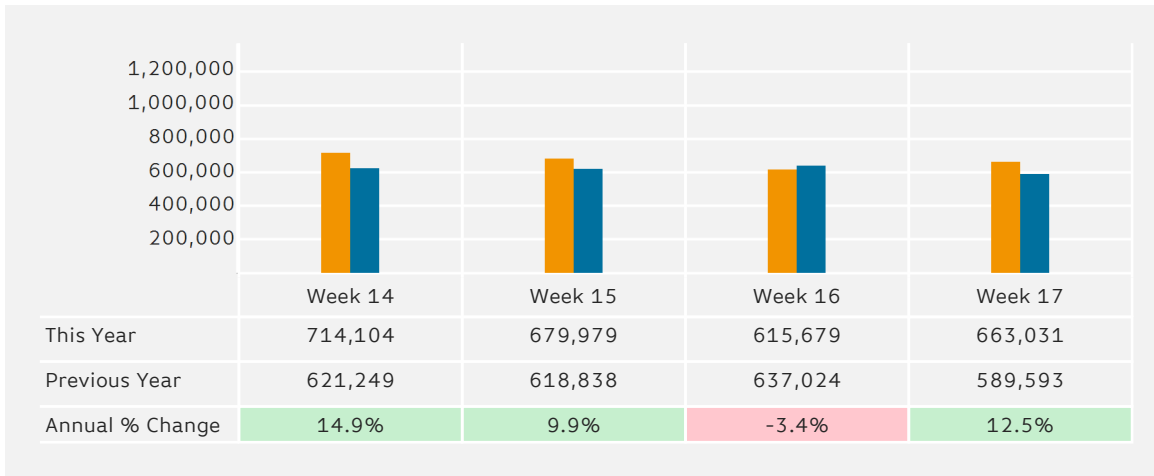
### Footfall by Day

The figures shown below are calculated using weekly averages.



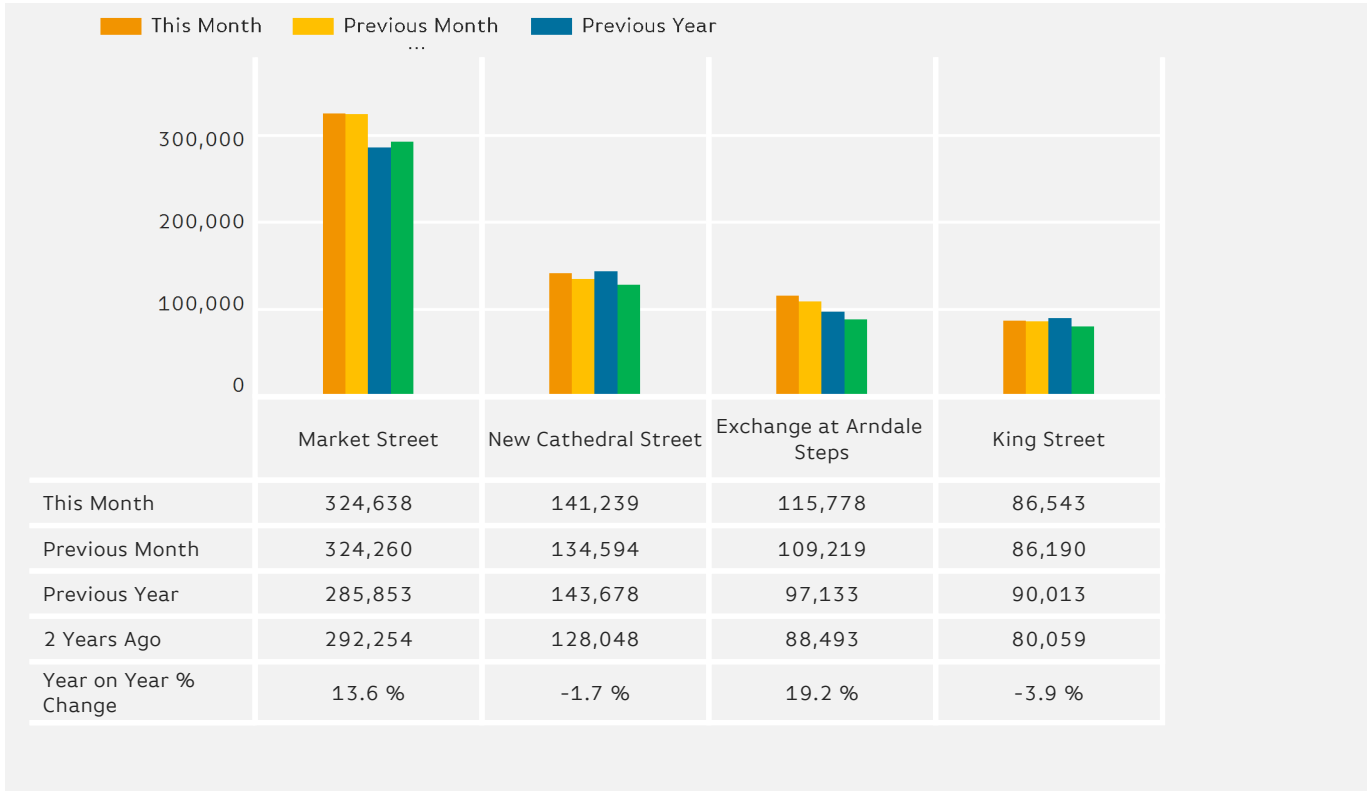
### Footfall by Week of Month

The figures shown below are calculated using weekly totals.



### Footfall Totals

The figures shown below are calculated using weekly averages.



### Footfall Totals

Counting By Location - Main Locations Only

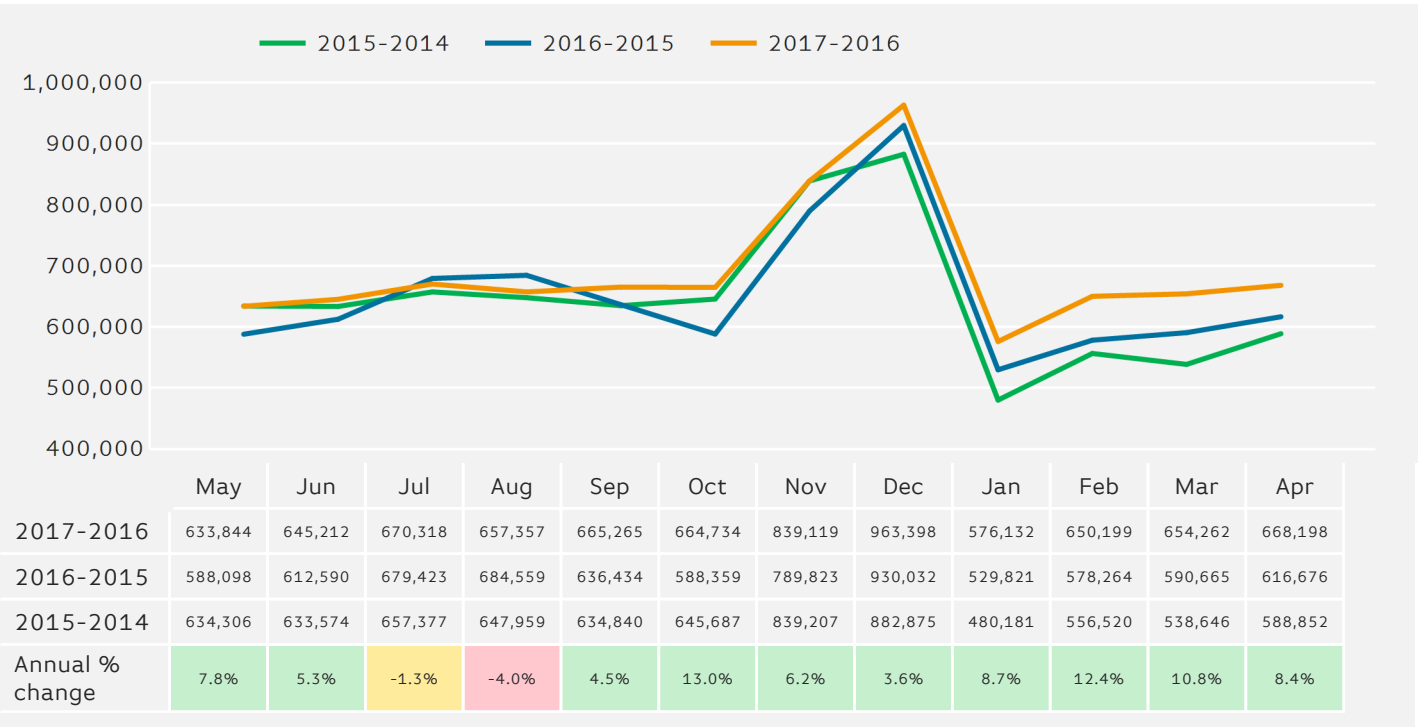
The figures shown below are based on weekly averages



- Market Street, 48.6 %
- New Cathedral Street, 21.1 %
- Exchange at Arndale Steps, 17.3 %
- King Street, 13.0 %

**Footfall - Rolling 12 Months**

The figures shown below are calculated using weekly averages.



Year to Date % Change is the annual % change in footfall from January of this year compared to the same period last year.  
 Year on Year % Change is the % change in footfall for this week compared to the same week in the previous year.  
 Week on Week % Change is the % change in footfall for this week from the previous week.