

# Manchester City Centre is Open



Manchester city centre is open for business. [CityCo, Chamber of Commerce](#) and [pro-manchester](#) are working with Manchester City Council, Greater Manchester Police and Marketing Manchester to warmly welcome back thousands of vital workers, commuters and visitors to the city centre.

Our public transport system is operating near normal timetables and parking operators, public realm managers, retailers, eateries and leisure venues have all worked hard to ensure the city is a safe, welcoming and lively place to come back to. As autumn sets in, Manchester's corporate community and public partners are sharing best practice and innovative solutions to working in our new world.

We believe there are many positives of employees heading safely back into the city centre; to work flexibly, foster new routines, meet with colleagues and friends, share ideas, and have fun in our modern and diverse city. As we all know, this is crucial in the coming months to support all reopened businesses and to help revive the city economy we all know.

Together, let's encourage more and more people to enjoy the benefits of working in such a vibrant place. We are here to help provide the information and reassurance you need to help build staff confidence in a return to work.





“

Getting people back into city centre offices is a vital element of the economy's recovery that will benefit those in retail, leisure, hospitality and the wider business community. But it has to be done safely, gradually and by providing as much support as possible to our customers and their employees, as well as our own colleagues.

We recognised that from the outset. Safety and wellbeing has underpinned each decision we've made so far.

*Ciara Keeling  
CEO, Bruntwood Works*

# The City Centre is Open

- Manchester Arndale, New Cathedral Street, Market Street, King Street, St Ann's Square, Spinningfields, Deansgate, Northern Quarter and other city retailers are open for lunchtime and after-work shopping
- Manchester city centre's hundreds of food and drink outlets are open for daily eats and drinks
- Manchester's cultural venues are open for gallery, cinema, library, and museum visits
- Gyms are open for mid-week workouts
- Corporate event venues are open for off-site meetings, training and presentations
- Manchester city centre's many hotels are all open and welcoming guests including Hilton, Dakota, Abode, Malmaison, Hyatt, Hyatt House, Mercure, INNSIDE by Melia, Lowry, Jury's Inn, Native, Whitworth Locke, Macdonald, DoubleTree Hilton
- The BID's [City Hosts](#), are on the streets to help returning workers and visitors





# WELCOME BACK

WE ARE OPEN WED-SUN 10.00-17.00. BOOK YOUR TICKETS NOW.

## Open Attractions

HOME

Manchester Art Gallery  
Manchester Central Library  
National Football Museum  
Everyman, Odeon, Vue Cinemas  
People's History Museum  
Science and Industry Museum  
The Printworks  
Castlefield Gallery  
Manchester Museum  
The Whitworth

A hand holds a black smartphone with a blue screen. The screen displays the NHS Test and Trace logo. The background is a blurred image of a person in a blue shirt.

**NHS**  
Test and Trace



# The City Centre is Prepared

- Face coverings are compulsory on public transport, in shops and indoors at hospitality venues ([download the city's promotional materials to help encourage the wearing of masks](#))
- [The NHS Test and Trace app and is up, and all hospitality venues must ask customers to scan-in when entering](#)
- Retailers and city businesses are actively managing entrances, exits, and the number of people in stores/restaurants/cafes with social distancing and well-being measures in place
- Employers are continuing to work with staff to make workplace safety the priority
- Office landlords have reengineered their 'Covid-Safe' work spaces with one-way systems, screens, hand-washing stations and full risk assessments in place
- Increased street cleansing regimes are running across high footfall streets, including jet-washing
- All public transport operators are operating enhanced cleaning schedules and displaying additional signage

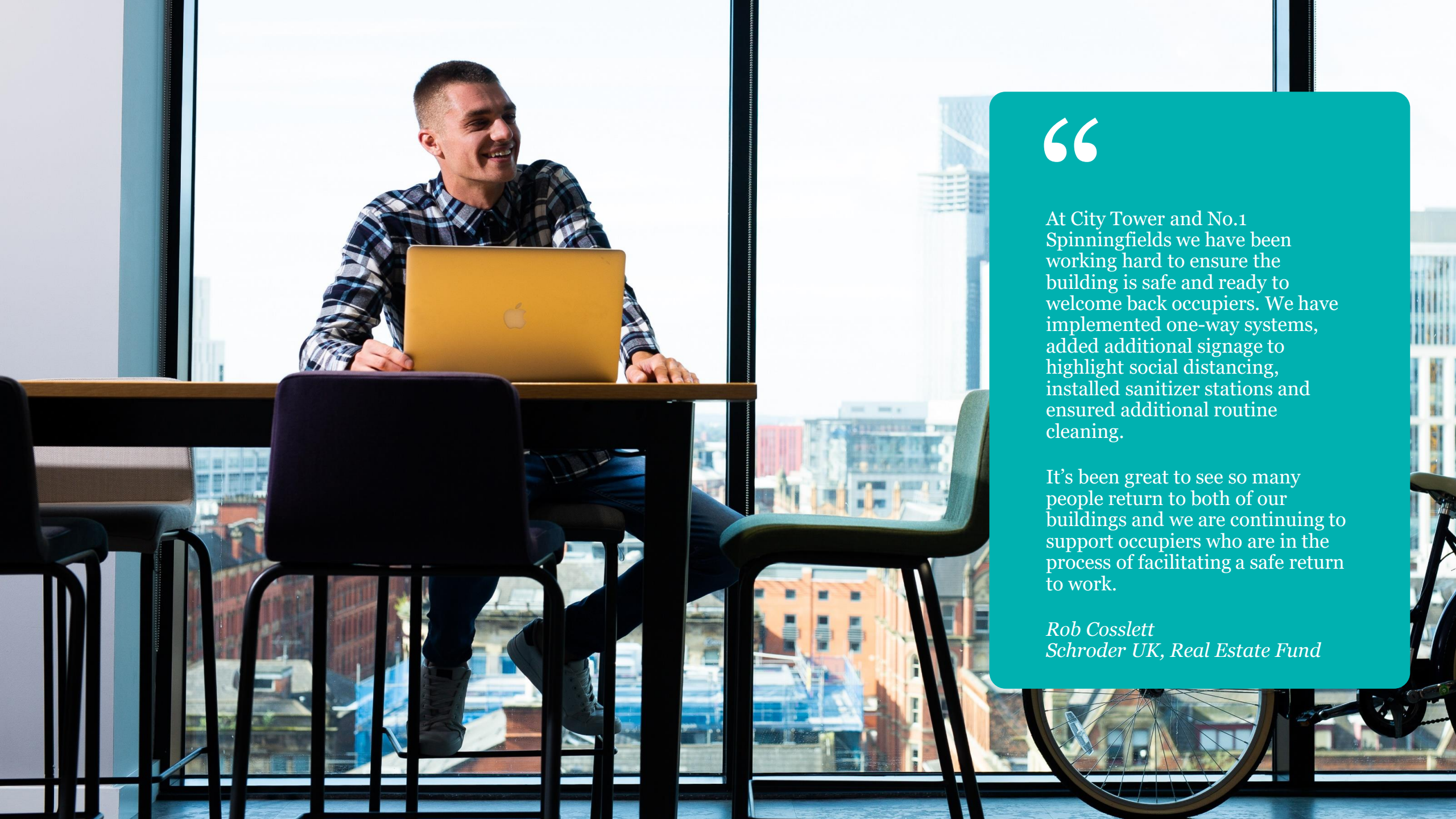
**YOU  
LOOK  
GREAT!**



**THANKS FOR  
WEARING A FACE  
COVERING**

[welcomebackmanchester.com](https://welcomebackmanchester.com)





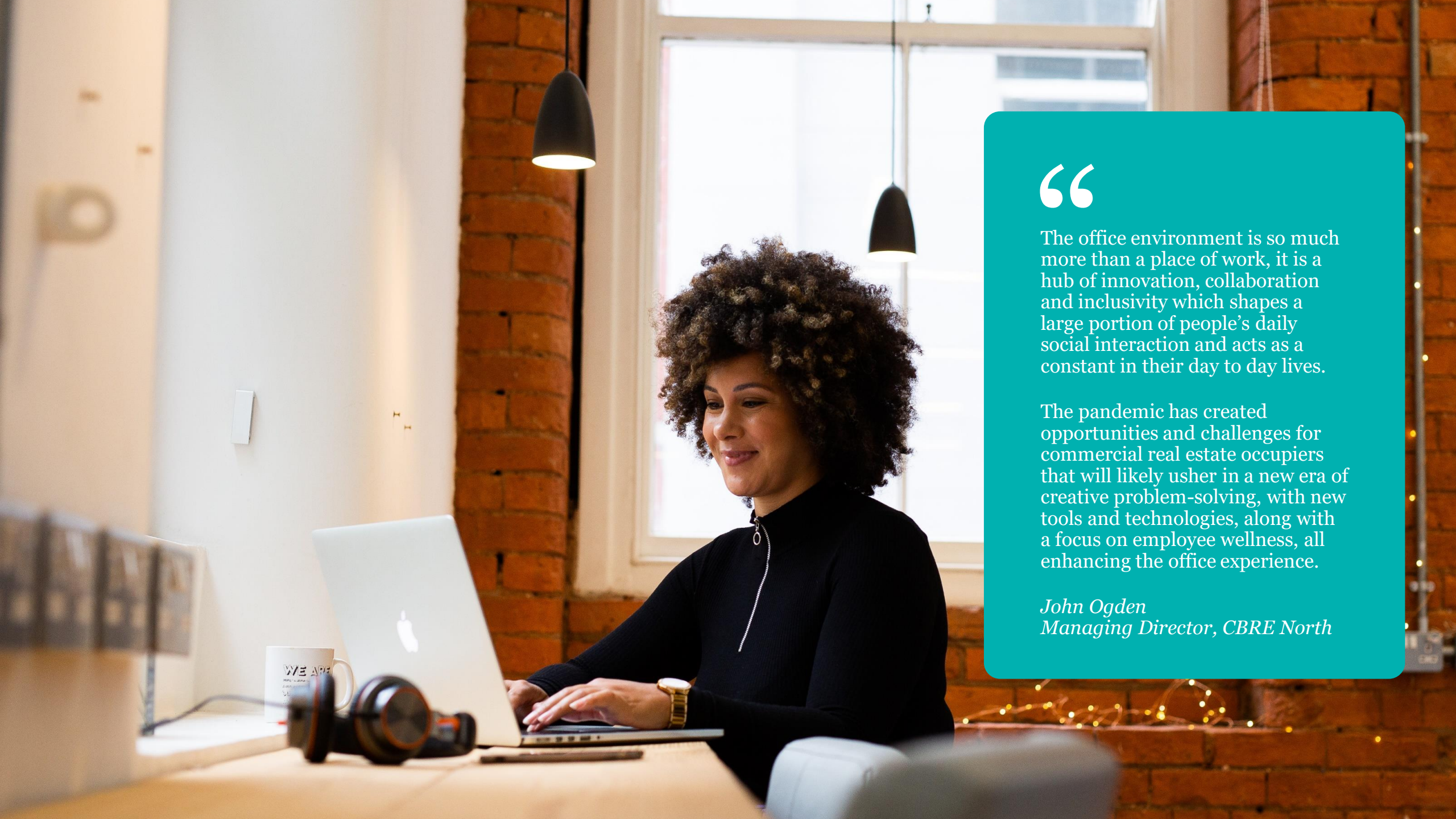
“

At City Tower and No.1 Spinningfields we have been working hard to ensure the building is safe and ready to welcome back occupiers. We have implemented one-way systems, added additional signage to highlight social distancing, installed sanitizer stations and ensured additional routine cleaning.

It's been great to see so many people return to both of our buildings and we are continuing to support occupiers who are in the process of facilitating a safe return to work.

*Rob Cosslett  
Schroder UK, Real Estate Fund*





“

The office environment is so much more than a place of work, it is a hub of innovation, collaboration and inclusivity which shapes a large portion of people's daily social interaction and acts as a constant in their day to day lives.

The pandemic has created opportunities and challenges for commercial real estate occupiers that will likely usher in a new era of creative problem-solving, with new tools and technologies, along with a focus on employee wellness, all enhancing the office experience.

*John Ogden  
Managing Director, CBRE North*



“Getting people back into the office in a secure way was always going to be a challenge, but the whole process has actually been relatively smooth. There have been lots of new measures – we’ve developed a one-way system, arranged a seating plan and additional hygiene stations, to name a few. We wanted to make sure we got it right, and that our employees felt safe and confident.

“From the outset, we’ve been in constant dialogue with Bruntwood Works about how to get the office into shape. Understandably, our plans have evolved as government guidance has changed so it’s really kept us on our toes. Since the office reopened, we’ve seen a steady increase in people returning. One thing we’ve noticed is that, even if people were unsure at first, once they’ve come back to the office for the first time, they want to return more regularly. Our teams have been reassured by the protective measures and precautions in place.”

*Vanessa Fox, Operations  
Director, Citypress*





# The City Centre is Accessible

- TfGM are committed to getting people moving safely
- Metrolink has been risk assessed and measures are all in place to increase social distancing and anti-viral cleaning protocols
- Off-peak tram and bus travel is encouraged to help maintain social distancing
- Hand sanitizer dispensers are located at transport interchanges, bus stations and tram stops
- TfGM staff are on-hand to assist passengers on platforms and at stations
- Walking and cycling are encouraged which can improve staff health and wellbeing (free cycle training is available)
- [NCP](#) and [CitiParks](#) are offering discounted car parking passes to assist returning workers



Metrolink services are extended by 1 hour: now finishing at midnight Monday-Saturday and 11pm on Sundays

On Sundays, the frequency of tram services are now one every 15 minutes between 7am and 11pm

On Monday-Friday tram services are operating at a 10-minute frequency between 6am and 7pm and then every 20 minutes until midnight

On Saturdays, a 10-minutes frequency is in place between 8am and 8pm and then every 20 minutes until midnight

TfGM are operating as many double trams as possible

Rochdale Town Centre  
Rochdale Town Centre  
unday 8th October, Marrington Moth  
24 min  
11:53:36



### Off-Peak Travel

Commuters are encouraged to travel off-peak (outside of 4-7pm)

To comply with social distancing, services have lower capacities than before

Traffic volumes have risen so it's vital for people who are going to work to think about how and when they are going to travel

Up-to-date travel advice at [tfgm.com/coronavirus](https://tfgm.com/coronavirus)





Now that flexibility is the new norm, Manchester city centre businesses need the support of office landlords, owners, managers and occupiers.

Let us know how we can help you to reassure staff and build confidence in a return to the workplace. So many city centre businesses depend on the custom of your staff.

cityco



pro-manchester



Greater Manchester  
Chamber of Commerce